



ADVICE FOR RESIDENTS

Householders are legally responsible for all household waste produced on their property. Most household waste can be disposed of in your bags or wheeled bin.

If you need to dispose of large items such as sofas, fridges there are several ways to do this legally .

- ❖ **Take large items to your council run tip . Find out about opening times on line.**
- ❖ **Consider hiring a skip .They can be value for money and you don't need a permit if its on your own property.**
- ❖ **Leicester city council can dispose of your large waste items as part of the bulky waste collection service .**
- ❖ **You can subscribe to a garden waste collection for an annual fee.**

Find out more at
www.lesswaste.org.uk

Advice for businesses

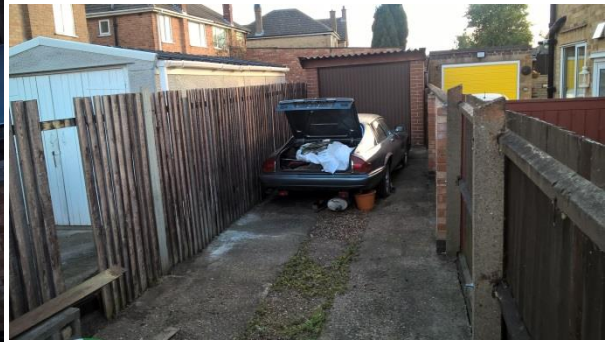
- **Under the Environmental Protection Act, every business has a duty of care when it comes to dispose of it's waste. If you are not meeting your legal responsibilities it could result in a fine or imprisonment.**

Here are a few tips

- **It is a legal requirement for businesses to use a licensed waste carrier to remove their waste –check they are registered.**
- **If you run a business from home you will still need to dispose of your waste correctly - you should not use you home waste collection.**
- **Provide a written description of your waste to the company collection your waste**
- **Keep signed copies of transfer notes for 2 years .**
- **Take action if you think your waste is being mishandled by those who remove it you could be fined if your waste is fly tipped.**

Find out more by visiting
www.rightwasterightplace.com

CITY WARDEN SERVICES



Some before and after photos of work done on private land in the ward .

Corporation road, axbridge, wolsey island way.



CITY WARDEN SERVICE



Charlotte Williams-Glover

Email:

city.warden@leicester.gov.uk

Website:

www.leicester.gov.uk/myaccount

Leicester City Wardens



City Wardens

City Wardens,
Phoenix House
1 King Street
Leicester,
LE1 6RN

These are the main issues that the City Wardens can help with:

- Educating the public and raising awareness of environmental crimes

Enforcement work on the following issues:

- Littering
- Dog Control – Dog fouling, dogs on leads, dog exclusion zones
 - Bins on the Street (Domestic and Commercial)
- Free Distribution of Printed Material
 - Fly-Posting
 - Small Scale Fly-Tipping
 - Graffiti
- Vehicles for Sale on the road
- Repairing Vehicles on the road
- Failure to produce Waste Transfer Documents
 - Street Litter Control Notices
 - Skips & Scaffolding
 - Untidy Alleys and Gardens

ABBNEY WARD



Updates

dog fouling stencils have been put down around hot spot areas.

Large amount of rubbish that was in the front garden of a property on corporation road has been cleared .

The walsey island way problems with the dis used site has now been cleared of fly tipping and over growth. After notices were sent to the landowner .

The large fly posters that were advertising an event in Northampton were removed from Belgrave boulevard and red hill way .

A warrant from the magistrates has been applied for to clear a back garden of waste on Beaumont leys lane.



The hand car wash on abbey lane was handed a notice for having 7 A Boards out blocking the pathway now only 1 is used .