

Heritage Panels Project Update



New Statue of Liberty Heritage Panel

Key Figures

Since September 2020 34 new heritage panels have been installed across the City.

There are currently 150 heritage panels across the City.

44 panels are in development and will be installed from September 2021-February 2022.

The Heritage panel project will be completed in March 2023. Between April 2022-March 2023 we will be installing 87 new heritage panels.



Image from Abbey Park Buildings panel – the team that built the Garden of Friendship
Leicester Mercury Archive at the University of Leicester



Panels Installed Since September 2020

Goode's Corner	Abbey Park Buildings
The Raw Dykes	Kirby and West
King Power Stadium	5 Grey Friars
Leicester Fosse FC 1884	Leicester Union Workhouse
Welford Road Tigers Rugby Club	The Wimbledon Works
Asfordby Street Police and Fire Station	Savoy Cinema
Gas Workers' Cottages	Statue of Liberty
Aylestone Road Gas Works and Gas Museum	20 Glebe Street
The Blitz in Highfields	Welford Road Cemetery
The Blitz hits Freeman Hardy and Wills	The Imperial Typewriter Factory
The Vulcan Works	Bow Bridge House
Development of Highfields	Leicester Central Railway
Housing at North Braunstone	Green Dragon Square

Panels Installed Since September 2020

Housing at North Braunstone	Green Dragon Square
Housing at Eyres Monsell	Pork Pie Library
Housing in Saffron Lane	St Peter's Church
4 Belmont Villas	Evington Cinema

Race Equality Panels

Race equality heritage panels which have been installed:

- **Imperial Typewriter Factory**
- **Development of Highfields**
- **Bow Bridge House** (focussing on the 19th century abolitionists Elizabeth Heyrick and Susannah Watts).

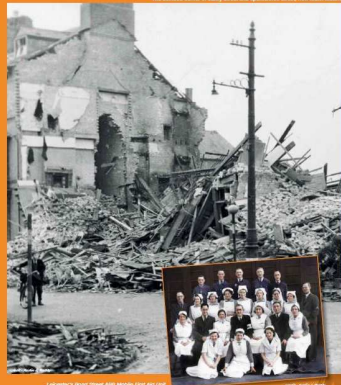
Race equality heritage panels currently in development:

- **African Caribbean Community Centre**
- **Highfields Centre**
- **Palais de Dance**



CHANGING PASTS

The Blitz in Highfields



Blitz Night
Leicester's worst night of Second World War bombing was around Highfields in November 1940. 108 people died in the City, on this 'Blitz Night'. On 19 November, at 10.15pm, three large bombs fell on the crossroads of Spokenstone, Saddy and Stoughton Streets. Saddy Street Methodist Church received a direct hit. Luckily 40 people in the Wesleyan Chapel schoolrooms next door (now Spokenstone Primary School) only had minor injuries. At 56 and 58 Saddy Street, six people died.

Help raced to the scene
16 members of the local Air Raid Precautions (ARP) Mobile First Aid Unit, led by Dr Ernest Garrett, came to help. They set up a first aid station for the injured, at 80 Spokenstone Street. Their bus, parked in Stoughton Street, was hit by a bomb and three police officers nearby. Detective Sergeant Leonard Norman and Detective Constable Brian Hawkes and George Trump, were killed.

Certificates of Merit
On 31 January 1941, four members of the ARP team received certificates of merit from the Duchess of Gloucester, Deputy Commandant-in-Chief, Order of St John.

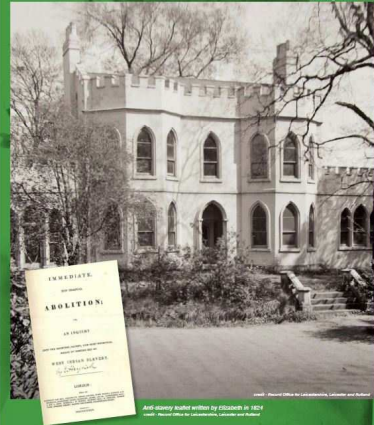
Medical Officer Dr Ernest Garrett
Sister Ivy Marsh
Senior First Aid Officer Carrie Wells
Nurse Hilda Hedford

For displaying 'the utmost gallantry and devotion to duty in most trying circumstances.'



AN ELEGANT TOWN

Bow Bridge House



A New Home for the Heyricks
Elizabeth Coleman, the daughter of a Leicester hosier, married John Heyrick in 1783. The happy couple soon moved into the newly built Bow Bridge House, expecting to live out their lives in their new home. However, John died just eight years later, forcing Elizabeth's life to take a new direction. In 1802 she opened Bow Bridge House as a girls' boarding school.

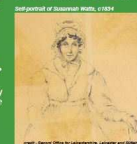
Elizabeth and Susannah
In 1812, there was an outbreak of the infectious disease typhoid nearby. Elizabeth moved the school to Welford Road and then to London Road. Elizabeth's close friend, Susannah Watts, who lived nearby at Dunsnett Hall, joined her at the school to teach French.

As well as girls education, Elizabeth and Susannah shared an interest in campaigning for the ending, or abolition, of slavery. In 1824, they went door-to-door asking people to stop buying sugar made at slave plantations in the West Indies.

The Immediate Abolition of Slavery
In 1824 Elizabeth wrote a heated calling for an immediate stop to slavery. It was distributed across England and America. In April 1825, Elizabeth became treasurer of the Birmingham Female Society for the Relief of British Slaves. The Leicester group started a month later.

Elizabeth died in 1831, although Susannah continued to campaign for the ending of slavery. In 1833, American campaigner William Lloyd Garrison would later claim: "Who and given the world the doctrine of immediate emancipation? It was a woman of England - Elizabeth Heyrick." While his statement clearly overlooks the contribution of contemporary Black campaigners in the fight against slavery, Heyrick's role in raising awareness of the issue was undoubtedly a major factor leading to the Abolition Act of 1833.

Bow Bridge House was demolished in 1905.



Portrait of Susannah Watts, c.1824

Small portrait of Elizabeth Heyrick, Leicester and England

Only known image of Elizabeth Heyrick

Location of Bow Bridge House

Portrait of Susannah Watts, c.1824

Small portrait of Elizabeth Heyrick, Leicester and England

Only known image of Elizabeth Heyrick

Location of Bow Bridge House

Portrait of Susannah Watts, c.1824

Small portrait of Elizabeth Heyrick, Leicester and England

Only known image of Elizabeth Heyrick

Location of Bow Bridge House

Portrait of Susannah Watts, c.1824

Small portrait of Elizabeth Heyrick, Leicester and England

Only known image of Elizabeth Heyrick

Location of Bow Bridge House

Portrait of Susannah Watts, c.1824

Small portrait of Elizabeth Heyrick, Leicester and England

Only known image of Elizabeth Heyrick

Location of Bow Bridge House

Portrait of Susannah Watts, c.1824

Small portrait of Elizabeth Heyrick, Leicester and England

Only known image of Elizabeth Heyrick

Location of Bow Bridge House

Portrait of Susannah Watts, c.1824

Small portrait of Elizabeth Heyrick, Leicester and England

Only known image of Elizabeth Heyrick

Location of Bow Bridge House

Portrait of Susannah Watts, c.1824

Small portrait of Elizabeth Heyrick, Leicester and England

Only known image of Elizabeth Heyrick

Location of Bow Bridge House

Portrait of Susannah Watts, c.1824

Small portrait of Elizabeth Heyrick, Leicester and England

Only known image of Elizabeth Heyrick

Location of Bow Bridge House

Portrait of Susannah Watts, c.1824

Small portrait of Elizabeth Heyrick, Leicester and England

Only known image of Elizabeth Heyrick

Location of Bow Bridge House

Portrait of Susannah Watts, c.1824

Small portrait of Elizabeth Heyrick, Leicester and England

Only known image of Elizabeth Heyrick

Location of Bow Bridge House

Portrait of Susannah Watts, c.1824

Small portrait of Elizabeth Heyrick, Leicester and England

Only known image of Elizabeth Heyrick

Location of Bow Bridge House

Portrait of Susannah Watts, c.1824

Small portrait of Elizabeth Heyrick, Leicester and England

Only known image of Elizabeth Heyrick

Location of Bow Bridge House

Portrait of Susannah Watts, c.1824

Small portrait of Elizabeth Heyrick, Leicester and England

Only known image of Elizabeth Heyrick

Location of Bow Bridge House

Portrait of Susannah Watts, c.1824

Small portrait of Elizabeth Heyrick, Leicester and England

Only known image of Elizabeth Heyrick

Location of Bow Bridge House

Portrait of Susannah Watts, c.1824

Small portrait of Elizabeth Heyrick, Leicester and England

Only known image of Elizabeth Heyrick

Location of Bow Bridge House

Portrait of Susannah Watts, c.1824

Small portrait of Elizabeth Heyrick, Leicester and England

Only known image of Elizabeth Heyrick

Location of Bow Bridge House

Portrait of Susannah Watts, c.1824

Small portrait of Elizabeth Heyrick, Leicester and England

Only known image of Elizabeth Heyrick

Location of Bow Bridge House

Portrait of Susannah Watts, c.1824

Small portrait of Elizabeth Heyrick, Leicester and England

Only known image of Elizabeth Heyrick

Location of Bow Bridge House

Portrait of Susannah Watts, c.1824

Small portrait of Elizabeth Heyrick, Leicester and England

Only known image of Elizabeth Heyrick

Location of Bow Bridge House

Portrait of Susannah Watts, c.1824

Small portrait of Elizabeth Heyrick, Leicester and England

Only known image of Elizabeth Heyrick

Location of Bow Bridge House

Portrait of Susannah Watts, c.1824

Small portrait of Elizabeth Heyrick, Leicester and England

Only known image of Elizabeth Heyrick

Location of Bow Bridge House

Portrait of Susannah Watts, c.1824

Small portrait of Elizabeth Heyrick, Leicester and England

Only known image of Elizabeth Heyrick

Location of Bow Bridge House

Portrait of Susannah Watts, c.1824

Small portrait of Elizabeth Heyrick, Leicester and England

Only known image of Elizabeth Heyrick

Location of Bow Bridge House

Portrait of Susannah Watts, c.1824

Small portrait of Elizabeth Heyrick, Leicester and England

Only known image of Elizabeth Heyrick

Location of Bow Bridge House

Portrait of Susannah Watts, c.1824

Small portrait of Elizabeth Heyrick, Leicester and England

Only known image of Elizabeth Heyrick

Location of Bow Bridge House

Portrait of Susannah Watts, c.1824

Small portrait of Elizabeth Heyrick, Leicester and England

Only known image of Elizabeth Heyrick

Location of Bow Bridge House

Portrait of Susannah Watts, c.1824

Small portrait of Elizabeth Heyrick, Leicester and England

Only known image of Elizabeth Heyrick

Location of Bow Bridge House

Portrait of Susannah Watts, c.1824

Small portrait of Elizabeth Heyrick, Leicester and England

Only known image of Elizabeth Heyrick

Location of Bow Bridge House

Portrait of Susannah Watts, c.1824

Small portrait of Elizabeth Heyrick, Leicester and England

Only known image of Elizabeth Heyrick

Location of Bow Bridge House

Portrait of Susannah Watts, c.1824

Small portrait of Elizabeth Heyrick, Leicester and England

Only known image of Elizabeth Heyrick

Location of Bow Bridge House

Portrait of Susannah Watts, c.1824

Small portrait of Elizabeth Heyrick, Leicester and England

Only known image of Elizabeth Heyrick

Location of Bow Bridge House

Portrait of Susannah Watts, c.1824

Small portrait of Elizabeth Heyrick, Leicester and England

Only known image of Elizabeth Heyrick

Location of Bow Bridge House

Portrait of Susannah Watts, c.1824

Small portrait of Elizabeth Heyrick, Leicester and England

Only known image of Elizabeth Heyrick

Location of Bow Bridge House

Portrait of Susannah Watts, c.1824

Small portrait of Elizabeth Heyrick, Leicester and England

Only known image of Elizabeth Heyrick

Location of Bow Bridge House

Portrait of Susannah Watts, c.1824

Small portrait of Elizabeth Heyrick, Leicester and England

Only known image of Elizabeth Heyrick

Location of Bow Bridge House

Portrait of Susannah Watts, c.1824

Small portrait of Elizabeth Heyrick, Leicester and England

Only known image of Elizabeth Heyrick

Location of Bow Bridge House

Portrait of Susannah Watts, c.1824

Small portrait of Elizabeth Heyrick, Leicester and England

Only known image of Elizabeth Heyrick

Location of Bow Bridge House

Portrait of Susannah Watts, c.1824

Small portrait of Elizabeth Heyrick, Leicester and England

Only known image of Elizabeth Heyrick

Location of Bow Bridge House

Portrait of Susannah Watts, c.1824

Small portrait of Elizabeth Heyrick, Leicester and England

Only known image of Elizabeth Heyrick

Location of Bow Bridge House

Portrait of Susannah Watts, c.1824

Small portrait of Elizabeth Heyrick, Leicester and England

Only known image of Elizabeth Heyrick

Location of Bow Bridge House

Portrait of Susannah Watts, c.1824

Small portrait of Elizabeth Heyrick, Leicester and England

Only known image of Elizabeth Heyrick

Location of Bow Bridge House

Portrait of Susannah Watts, c.1824

Small portrait of Elizabeth Heyrick, Leicester and England

Only known image of Elizabeth Heyrick

Location of Bow Bridge House

Portrait of Susannah Watts, c.1824

Small portrait of Elizabeth Heyrick, Leicester and England

Only known image of Elizabeth Heyrick

Location of Bow Bridge House

Portrait of Susannah Watts, c.1824

Small portrait of Elizabeth Heyrick, Leicester and England

Only known image of Elizabeth Heyrick

Location of Bow Bridge House

Portrait of Susannah Watts, c.1824

Small portrait of Elizabeth Heyrick, Leicester and England

Only known image of Elizabeth Heyrick

Location of Bow Bridge House

Portrait of Susannah Watts, c.1824

Small portrait of Elizabeth Heyrick, Leicester and England

Only known image of Elizabeth Heyrick

Location of Bow Bridge House

Portrait of Susannah Watts, c.1824

Small portrait of Elizabeth Heyrick, Leicester and England

Only known image of Elizabeth Heyrick

Location of Bow Bridge House

Portrait of Susannah Watts, c.1824

Small portrait of Elizabeth Heyrick, Leicester and England

Only known image of Elizabeth Heyrick

Location of Bow Bridge House

Portrait of Susannah Watts, c.1824

Small portrait of Elizabeth Heyrick, Leicester and England

Only known image of Elizabeth Heyrick

Location of Bow Bridge House

Portrait of Susannah Watts, c.1824

Small portrait of Elizabeth Heyrick, Leicester and England

Only known image of Elizabeth Heyrick

Location of Bow Bridge House

Portrait of Susannah Watts, c.1824

Small portrait of Elizabeth Heyrick, Leicester and England

Only known image of Elizabeth Heyrick

Location of Bow Bridge House

Portrait of Susannah Watts, c.1824

Small portrait of Elizabeth Heyrick, Leicester and England

Only known image of Elizabeth Heyrick

Location of Bow Bridge House

Portrait of Susannah Watts, c.1824

Small portrait of Elizabeth Heyrick, Leicester and England

Only known image of Elizabeth Heyrick

Location of Bow Bridge House

Portrait of Susannah Watts, c.1824

Small portrait of Elizabeth Heyrick, Leicester and England

Only known image of Elizabeth Heyrick

Location of Bow Bridge House

Portrait of Susannah Watts, c.1824

Small portrait of Elizabeth Heyrick, Leicester and England

Only known image of Elizabeth Heyrick

Location of Bow Bridge House

Portrait of Susannah Watts, c.1824

Small portrait of Elizabeth Heyrick, Leicester and England

Only known image of Elizabeth Heyrick

Location of Bow Bridge House

Portrait of Susannah Watts, c.1824

Small portrait of Elizabeth Heyrick, Leicester and England

Only known image of Elizabeth Heyrick



Recently Installed Heritage Panels

Panels in Development

St Mary's Triangle	Bow String Bridge/Braunstone Gate
Infirmery Square	Red Hill Circle
African Caribbean Centre (Race Equality Panel)	Monk's Rest Garden
Highfields Centre (Race Equality Panel)	Magazine Gateway
Palais de Dance (Race Equality Panel)	William John Higgott
Dolphin Square/Historic Market	Bowling Green Fire Station
Fish Market	Rutland Street Fire Station
The Pavilion Western Park	Guru Tegh Bahadur Sikh Temple
Beaumont Leys House	Shri Swaminarayan Mandir Temple
Beaumont Lodge	Leicester and Swannington Railway /West Bridge Wharf

Panels in Development

Fosse Neighbourhood Centre	Wycliffe Hall & Society Houses
Narborough Road Tram Depot	Wycliffe Society for the Blind
Westcotes	Wakerley's House – Gwendolen Road
Haymarket Theatre	Electric Tram Terminus
Bede Island	Evans Weir Industrial Area
Filbert Street Football Stadium	All Saints Church
St Margaret's Baths	Priests House

Panels in Development

St Margaret's Baths	John O Gaunt's Cellar
Braunstone Leisure Centre	Railway Powerhouse
Sir Johnathan North School	Bede House Towpath
Former Turkish baths	Uganda Heritage
Leicester Cathedral	Coffee v Ale

Positive Publicity

The new heritage panels have been very well received.

Recently, there was a very positive article in the Leicester Mercury.

There has also been a positive response on social media.

“Most of my childhood is now reflected in panels in Leicester.” (Twitter)

“Loving the new heritage boards denoting the place where Leicester Fosse was founded in 1884.” (Leicestershire and Rutland Heritage Forum Facebook page)



16
LEICESTER MERCURY
TUESDAY, JULY 13, 2021
@leicesterslive
facebook.com/leicesterm Mercury
TUESDAY, JULY 13, 2021
LEICESTER MERCURY
17

News

From famous lady to FA Cup win, panels tell city's story

By DAVID OWEN

FROM the Clock Tower to the Gold-hall, Leicester has its share of historical landmarks.

A series of heritage panels put in place around the city in recent years celebrate the most prominent structures - and people associated with them.

Now, like more panels have been put up as part of the city council's Story of Leicester project, ranging from a distinctive statue to a family of industrialists and designers.

STATUE OF LIBERTY

Values in the city - including many travelling football and rugby fans - are often prepared to witness a smaller replica of the United States of America's most celebrated landmark.

It even stands on Liberty Island, a commission a replica of the Statue of Liberty to stand atop its own monument.

When the statue was unveiled in 1890, the dairy was processing and bottling 17,000 gallons of milk every day by the 1960s.

THE GIMSONS

Two of the new panels

The city council spokesman said: "From humble beginnings in the 1860s, the dairy was processing and bottling 17,000 gallons of milk every day by the 1960s."

They are an effective and entertaining way of ensuring that we don't forget our city's unique past

highlight buildings associated with the Gimsons - a family of engineers and designers who had a huge influence on the city.

Number 4 Beech Street, a prominent member of the Leicester Society, is commemorated with a panel of 20 Glass Street, in Highgate, where he lived from 1891 until his death in 1908.

Other new panels feature the Gimsons, founder of the engineering company who created Abbey Park and its buildings, the architect, Isaac Ro-

1870, his son, James, who also lived in the property, went on to become a key member of the Arts and Crafts movement.

Sydney Gimson, Isaac's oldest son and a prominent member of the Leicester Society, is commemorated with a panel of 20 Glass Street, in Highgate, where he lived from 1891 until his death in 1908.

Other new panels feature the Gimsons, founder of the engineering company who created Abbey Park and its buildings, the architect, Isaac Ro-

midale, who had his practice at 5 Grey Friars, and Isidore Hart and George Levy, whose clothing business operated from the state-of-the-art Winkfield Works from 1870.

Hart & Levy are remembered in a panel in Southam Street.

As well as the nine new panels, there has been an update to the heritage panel at the King Power Stadium, which now proudly includes a reference to Leicester City's historic FA Cup win in May this year.

City mayor Sir Peter Soulsby said: "When we created our first heritage panels back in 2014, we unveiled Leicester's hidden history and presented it in an easy-to-read way - making the panels instantly popular with both local people and visitors."

"Like all the others in the collection, these new heritage panels are a simple, effective and entertaining way of ensuring that we don't forget our city's unique and fascinating past."

Leicester's heritage information panels can be seen in shopping centres across the city.

Weather

Around the Country

Location	Tuesday	Wednesday
Birmingham	cloudy 21/30	cloudy 21/28
Bristol	cloudy 22/22	cloudy 21/21
Cardiff	cloudy 22/22	cloudy 21/21
Edinburgh	cloudy 21/20	cloudy 21/20
Exeter	cloudy 23/28	cloudy 23/28
Gloucester	cloudy 22/22	cloudy 21/21
Leeds	cloudy 21/20	cloudy 21/20
Liverpool	cloudy 21/20	cloudy 21/20
London	cloudy 21/20	cloudy 21/20
Manchester	cloudy 21/20	cloudy 21/20
Nottingham	cloudy 21/20	cloudy 21/20
Sheffield	cloudy 21/20	cloudy 21/20
Southampton	cloudy 21/20	cloudy 21/20
Swansea	cloudy 21/20	cloudy 21/20

Today's Weather

Shiny with clouds today. Afternoon highs will range from 21 to 23°C.

Four-Day Outlook

Day	Weather	Temp (C/F)
Tuesday	Cloudy	23°C / 73°F
Wednesday	Cloudy	14°C / 57°F
Thursday	Cloudy	23°C / 73°F
Friday	Sunny	25°C / 77°F
Saturday	Sunny	25°C / 77°F
Sunday	Sunny	13°C / 55°F

Anglia

Healthcare & Mobility

IN THE REGION WITH 1000'S OF MOBILITY AIDS AND FURNITURE

THE WORLD'S LIGHTEST FOLDING SCOOTER

AS SEEN ON TV

HALF PRICE SALE ON LIFT AND RECLINE CHAIRS

15KG NEW ULTRA LIGHTWEIGHT CHAIR WITH ATTENDANT CARE

GOOD SELECTION OF NEW LIGHTWEIGHT AUTO FOLDING SCOOTERS

A WIDE SELECTION OF LIFT CHAIRS - NEW & SECOND HAND

STRAIGHT AND CURVED BACKLIFTS - ALL BRANDS

RIGID & HIGH BACK CHAIRS

ADJUSTABLE ALL SIZES AVAILABLE

The Art Deco dairy

The Kirby & West dairy, Western Boulevard (Image: Leicester Mercury / Chris Gordon)

Another board dedicated to Leicester's famous **Kirby & West dairy** has been placed in Western Boulevard, where the company's distinctive Art Deco premises once stood.

The city council spokesman said: "From humble beginnings in the 1860s, the dairy was processing and bottling more than 17,000 gallons of milk every day by the 1960s."

Leicester Mercury 13th July 2021

Leicestershire Live website

10th July 2021

Heritage Panel Project Team

Emma Buckler – Project Manager

Gurinder Mann – Heritage Panel Project Officer

Nathan Alesbrook – Heritage Panel Support Officer (Tuesdays only)

Contact the team at

heritage-panels@leicester.gov.uk

