

**Clare Mills, Childrens
Commissioner,
Public Health,
Leicester City Council**

**Colin Cross, Leicester
Partnership NHS Trust**

**Healthy Together,
Start for Life Workforce Pilot,
Breastfeeding Rates**



What is 0-19 Healthy Child Programme?

Early years have a lifelong effect on health and wellbeing, educational achievement and economic status.

Healthy Together is Leicester's offer:

28-36 week antenatal contact

10-14 day new birth contact

6-8 week contact

10-12 month contact

2-2 ½ year contact

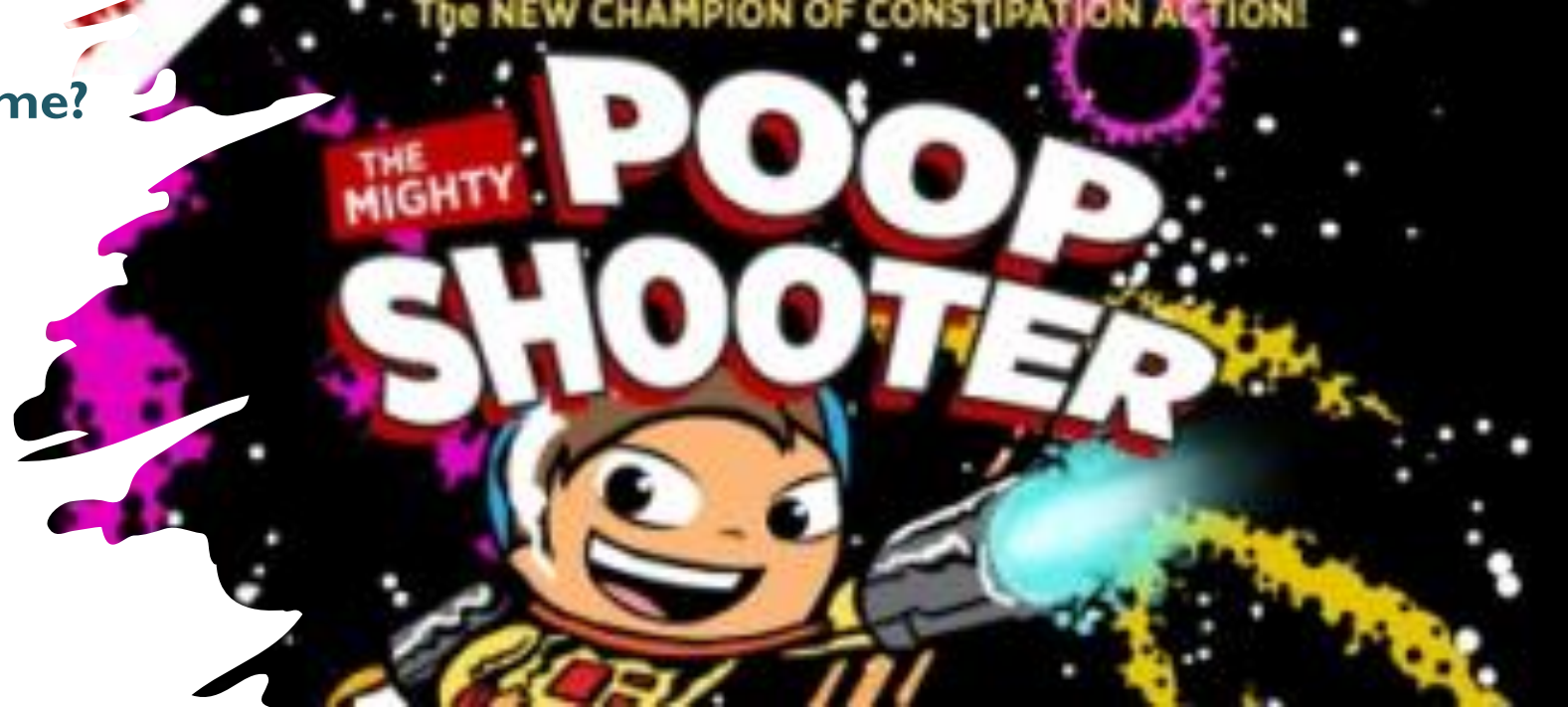
Reception (National Child Measurement Programme)

Year 6 (National Child Measurement Programme)

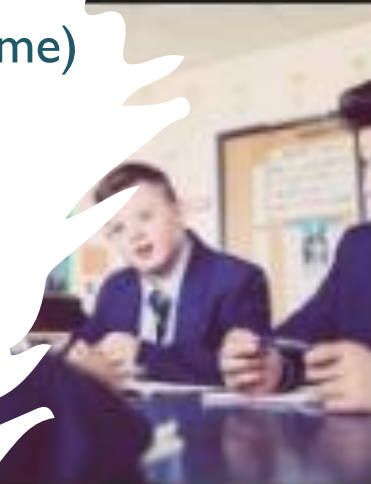
Evidence based packages of care

Digital offer

Safeguarding children is embedded through Healthy Together as Public Health Nurses have a vital role in keeping children safe and supporting local safeguarding arrangements.



ADVICE



Reducing your school nursing service

The school nursing service is available for you



Text Your Public Health Nurse (School Nurse)



Helpful Tips for a Healthy You

If you are, you will need to start thinking about

Healthy Together

1st October 2023 – 30th September 2030 (7 years)

Commissioned via section 75 of National Health Services Act 2006 between a local authority and an NHS body in England.

Key changes:

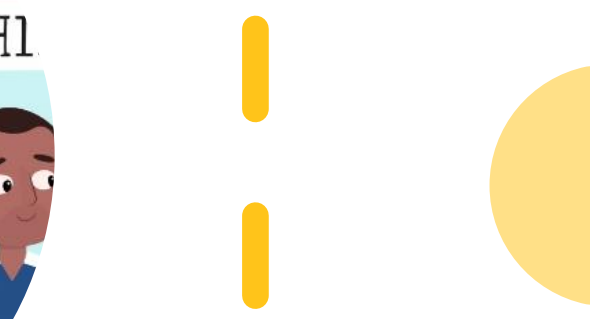
- 1) Intensive support for vulnerable families changed from Early Start to Universal Targeted “step up, step down” support.
- 2) Exploration of implementation for 3-4 month contact
- 3) Exploration of an addition of 3-3½ (pre-school) contact via a Digital Health Contact (DHC)
- 4) Digital Health Contact (year 7,9,11) becomes part of the core offer delivered within schools.
- 5) Introduction of Key Performance indicators for Public Health Nurses (School Nursing).
- 6) Healthy Together Helpline.



How is it going?

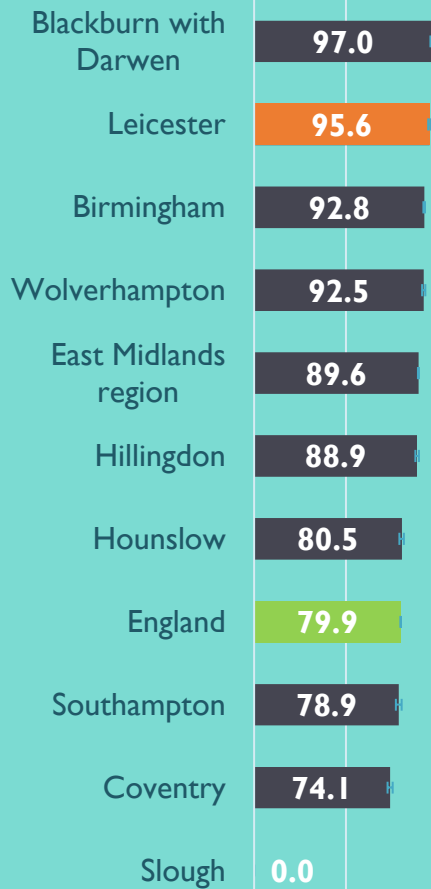
Section 75 enables building of a good collaborative culture; strong, trusting partnerships, open discussion and challenge, and builds consensus and understanding.

LPT is a consistently high performing provider against both peers and England.

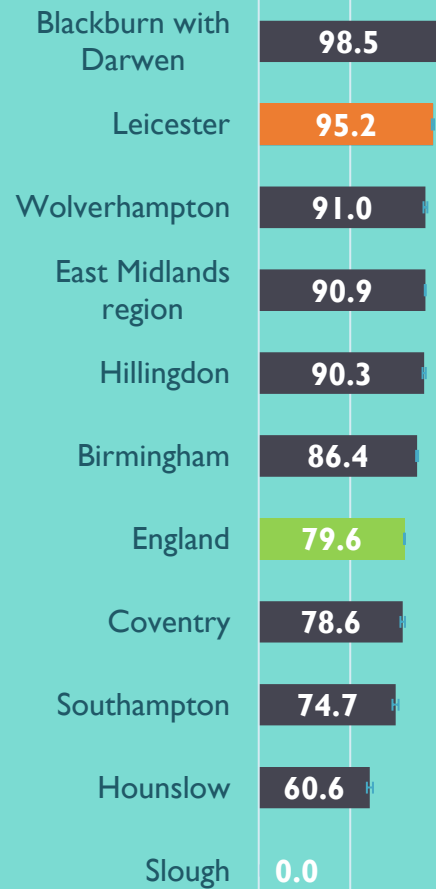


Performance against peers

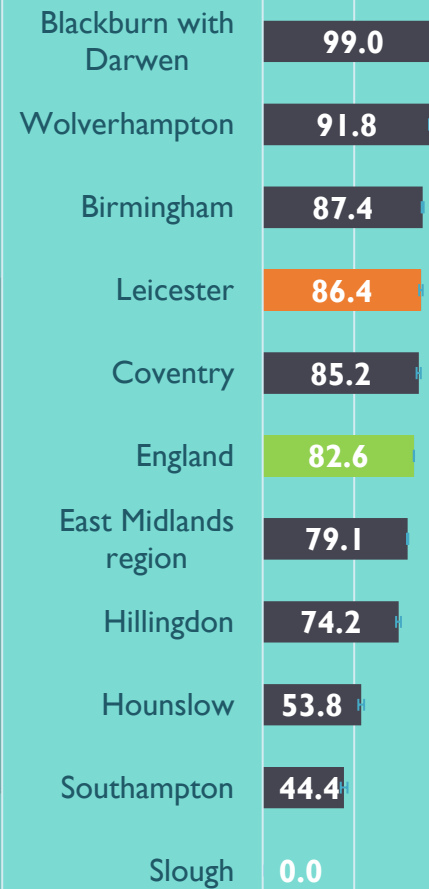
Proportion of New Birth Visits (NBVs) completed within 14 days: 2022/23



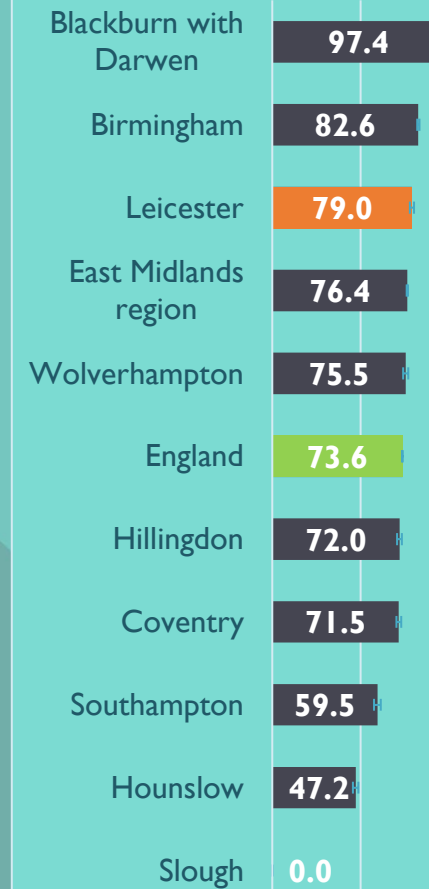
Proportion of infants receiving a 6 to 8 week review: 2022/23




Proportion of children receiving a 12-month review: 2022/23



Proportion of children who received a 2 to 2½ year review: 2022/23





Action plan to
support
Antenatal
performance
(Actual: 49%
Target: 60%):

Review of Time and Motion study and Antenatal Quality Improvement Project to better understand workforce requirements.

Reviewing outcomes from the Best Start for Life workforce pilot, including the creation of new roles to support the nursing team.

Improving the healthy growth pathway, working with partners (primary care and midwifery) to strengthen responsibilities and information sharing.

Improvements to safeguarding practice, focusing on better partnership working to support the health element of strategy calls.



Current pressures:

Ongoing workforce shortages
(local and national issue)

Reduced budget and additional
£200,000 reduction (1st April
2024)

Best Start for Life Workforce Pilot

(Department of Health and Social Care)

£1.5 million (all money to partners, none retained in LCC),
18 months, 5 pilot areas.

Collaborative bid between:

Leicester City Council

LPT

University Hospitals Leicester

Leicester Mammas

Heads Up Leicester (previously Centre for Fun and Families)

Aim:

Explore how to develop, grow and support workforce

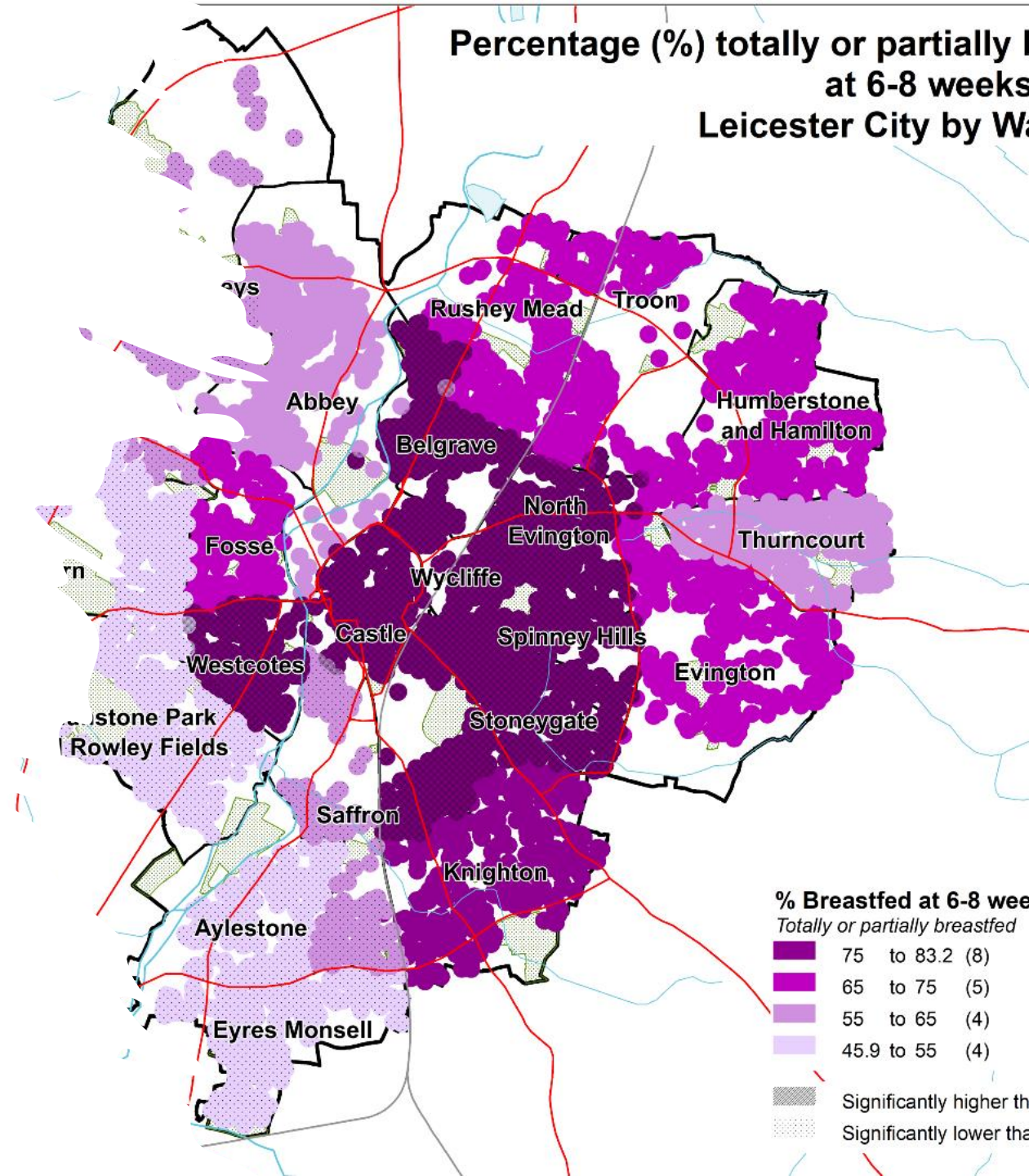
Provide additional support during first 1,001 Critical Days



Leicester
City Council

Breastfeeding at 6-8 weeks

- Key points:
 - 68% of babies are recorded as totally/partially breastfed at 6-8 weeks in 2022/23 (based on number of infants with a breastfeeding status recorded)
 - Breastfeeding rates are generally lower in the south and west of Leicester
 - Rates are significantly lower in Eyres Monsell and Western (<50%), Aylestone, Braunstone, Saffron and Beaumont Leys (50-60%)
 - Rates are highest in Wycliffe (83.2%), Stoneygate (79.3%) and North Evington (74.4%)





Breastfeeding at 6-8 weeks

Next Steps:

- Bumps to Babies (Teen/Universal)
- Start for Life (Hospital Peer Support)
- Family Hubs (Infant Feeding Workstream)