

# Placement Sufficiency Strategy

Supporting Data

2025 to 2030

## Placement Sufficiency

**The council has a legal duty under Section 22G of the Children Act 1989 to ensure that there is sufficient accommodation for children looked after that meets their needs, and that as far as is reasonably practicable is within the local authority area.**

## **Placement Sufficiency Strategic Aims**

- To invest and strengthen our edge of care offer to support children to continue living with their families**
- To support stability for our children and young people, by providing timely options to achieve permanence**
- To increase our recruitment and retention of mainstream and more specialist foster carers**
- To reduce our use of out of area children's homes and IFA's and increase our inhouse residential homes**
- To commission smarter to reduce costs, assure quality establishing stronger commissioning practices**
- To expand our provision of high quality semi-independent and independent accommodation working**

**Full details of our plans are shown in the Placement Sufficiency Strategic Delivery Plan, 2025 to 2030.**

# **Children Looked After Population Needs Analysis**

**Number of Children Looked After has remained relatively stable**

**597 Children Looked After and 305 Care Leavers (18-21) March 2025**

**Number of Children Looked After per 10,000 is below the national average**

**Majority of children looked after live locally in the City or 20 mile radius**

**Average length of time that children remain looked after 2024 – 2025 is 31 months**

**Ethnicity of children looked after remains relatively stable**

**Ratio of Children from Abroad Seeking Safety increased but below national average**

**Gender ratio of male children looked after has increased slightly (CASS Impact)**

**Number of children with EHCP has increased**

# What Our Young People Tell Us – Leicester Asks Survey

## Total completing the survey



**34%**

Live with Foster Carers

**28%**

Live in a Residential Home

**22%**  
Other

**11%**

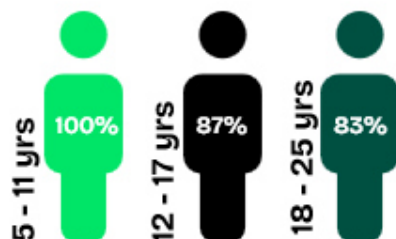
Live with Family or Friends

**4%**

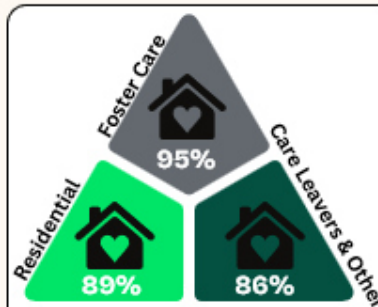
Prefer not to Say



## Like where they are living based on:



**Their age**



**Where they live**



## Like their bedroom

Differences between age groups



5 - 7yrs



8 - 11yrs




12 - 17yrs




My support worker is very kind and listens to me and has helped me a lot


Trust the process - it'll work out in the end. Don't be afraid to make changes for yourself.


 The majority have carers that notice how they feel

92.5%

 The majority of responders have been in long-term care of 3+ years.

71%

 The majority like where they live.

 The majority have their bedroom how they like

 The majority trust their carers

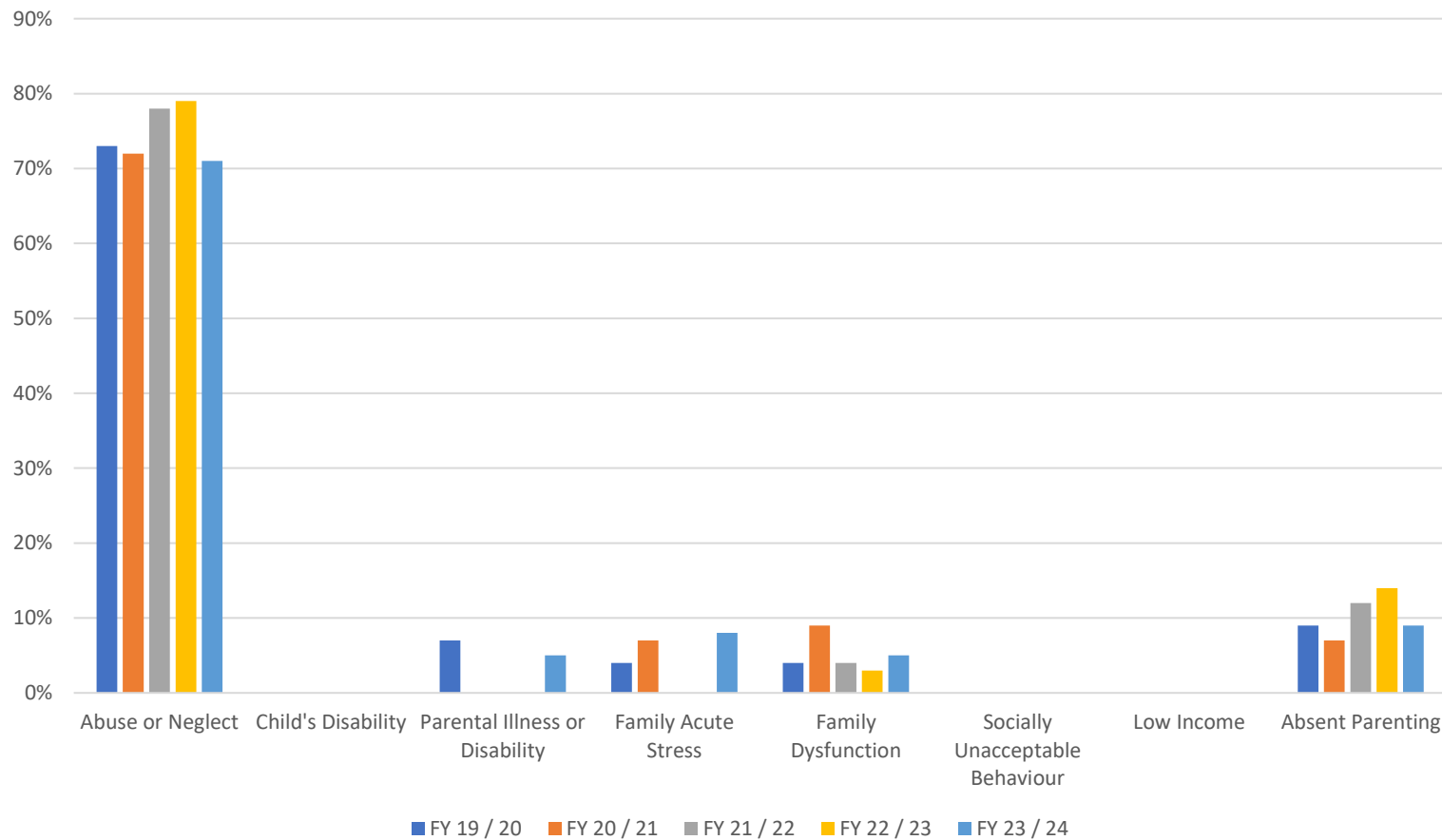
 The majority feel safe.



95%

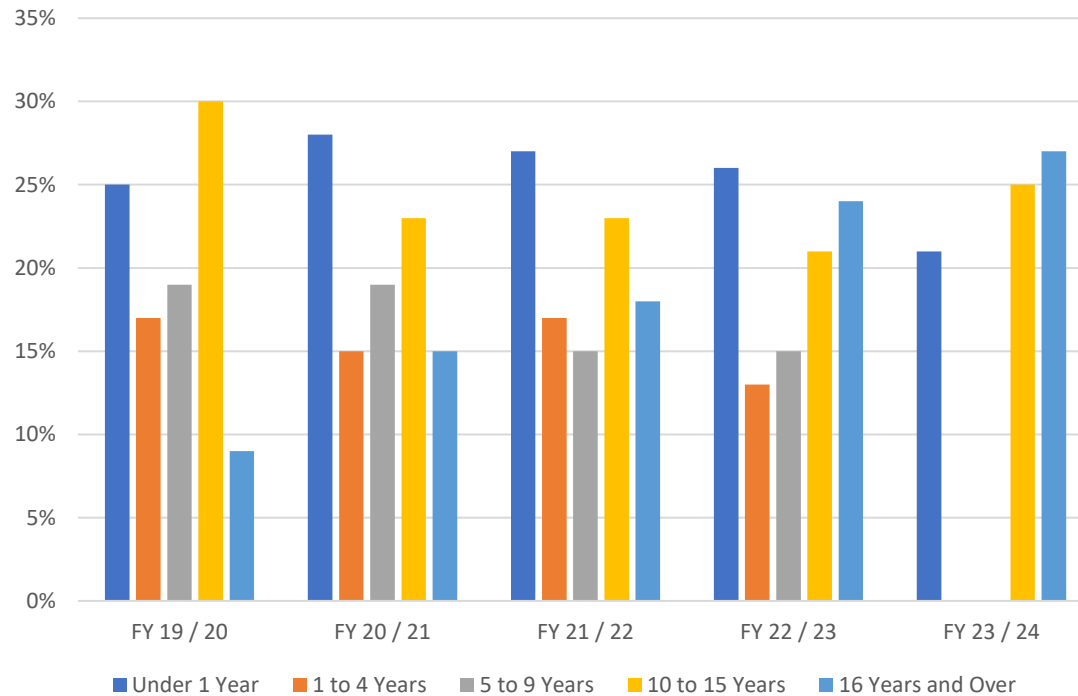
# Children Looked After Population Needs Analysis

## Reasons Children become Looked After



# Children Looked After Population Needs Analysis

## Entrants to care by Age





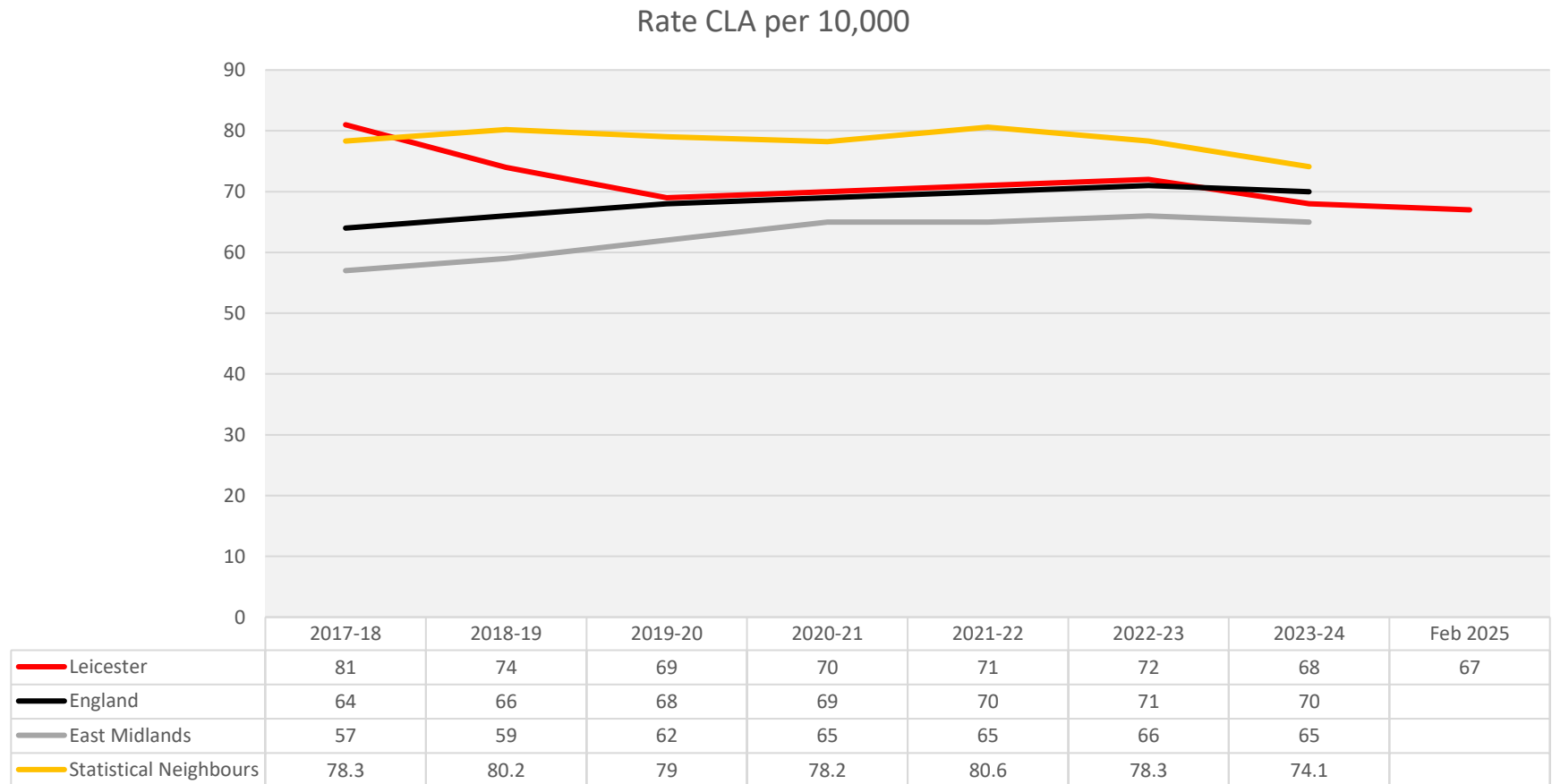
# Children Looked After Population Needs Analysis

## Where our children looked after live

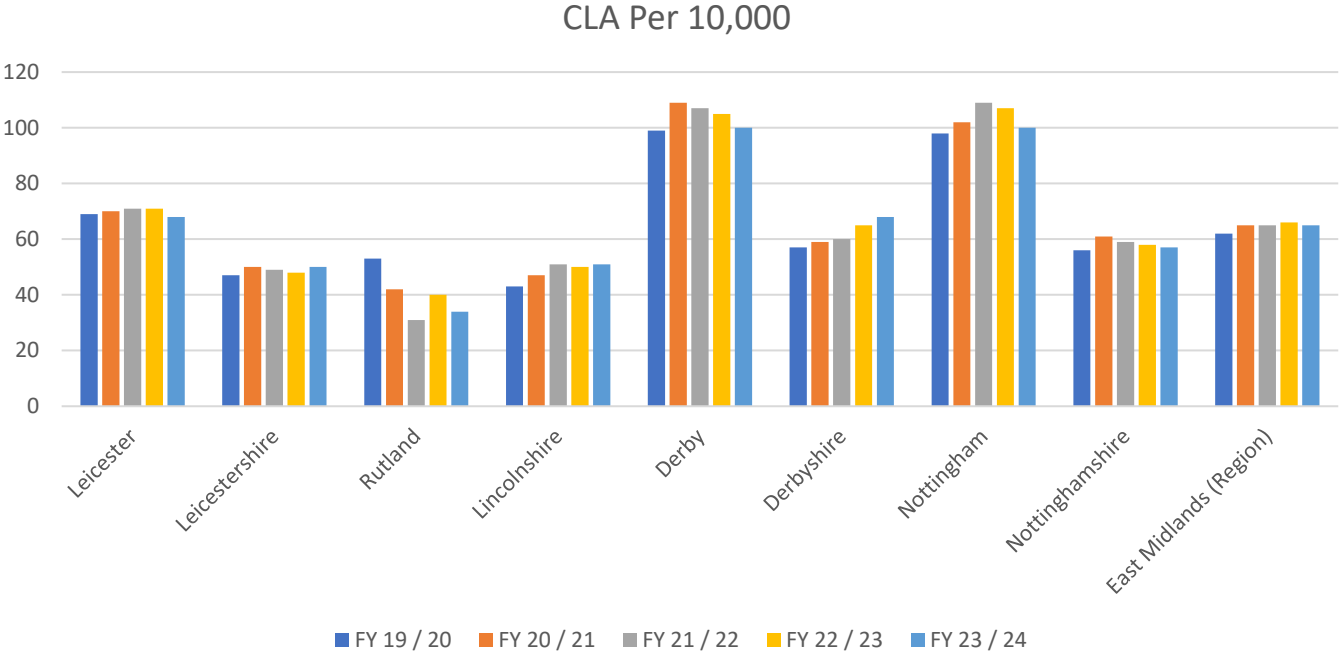


# Children Looked After Population Needs Analysis

## Rate of children looked after per 10,000 is below national average



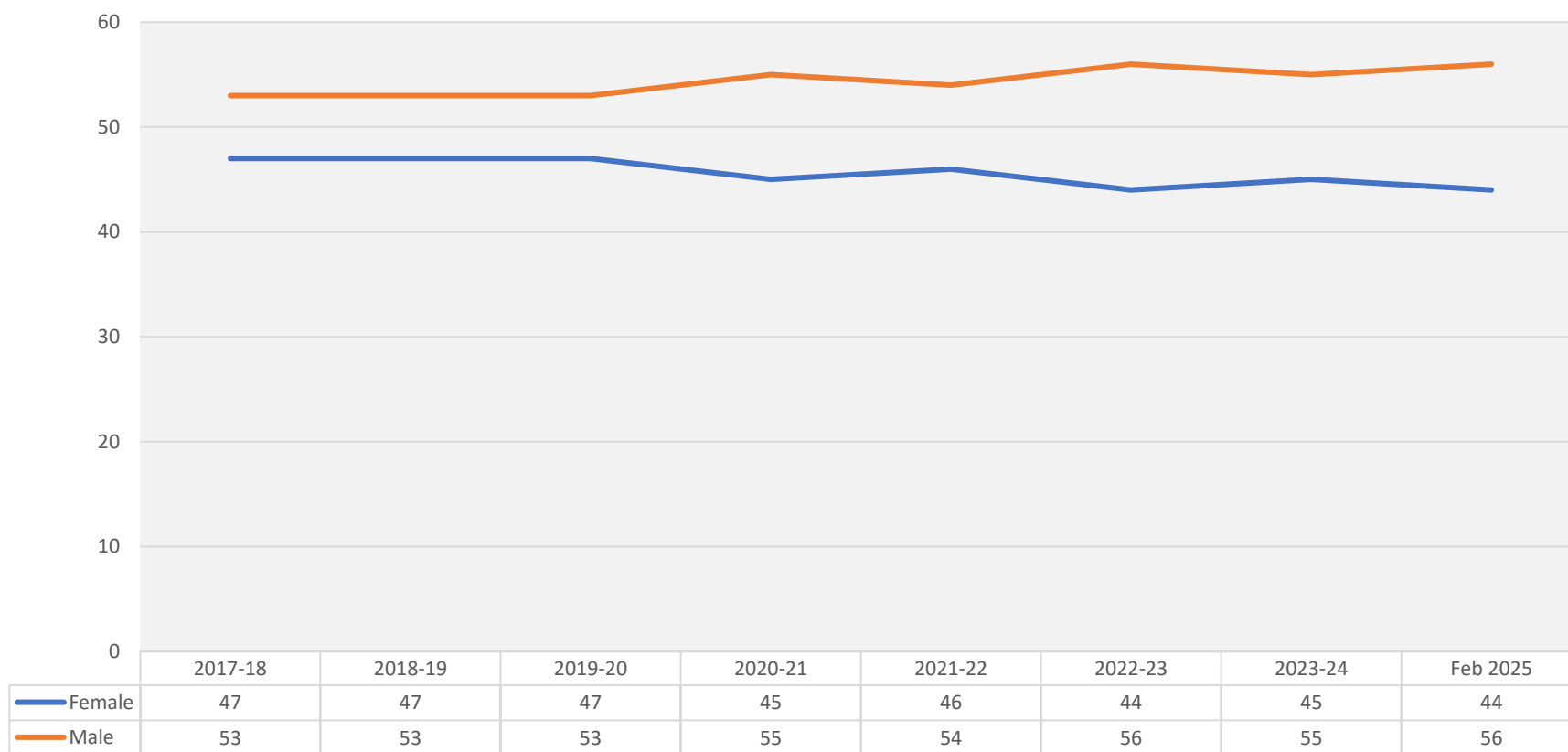
# Numbers of Children Looked After per 10,000 Lower than East Midlands Unitary Averages



# Children Looked After Population Needs Analysis

## Ratio of male children has increased slightly (children from abroad seeking safety)

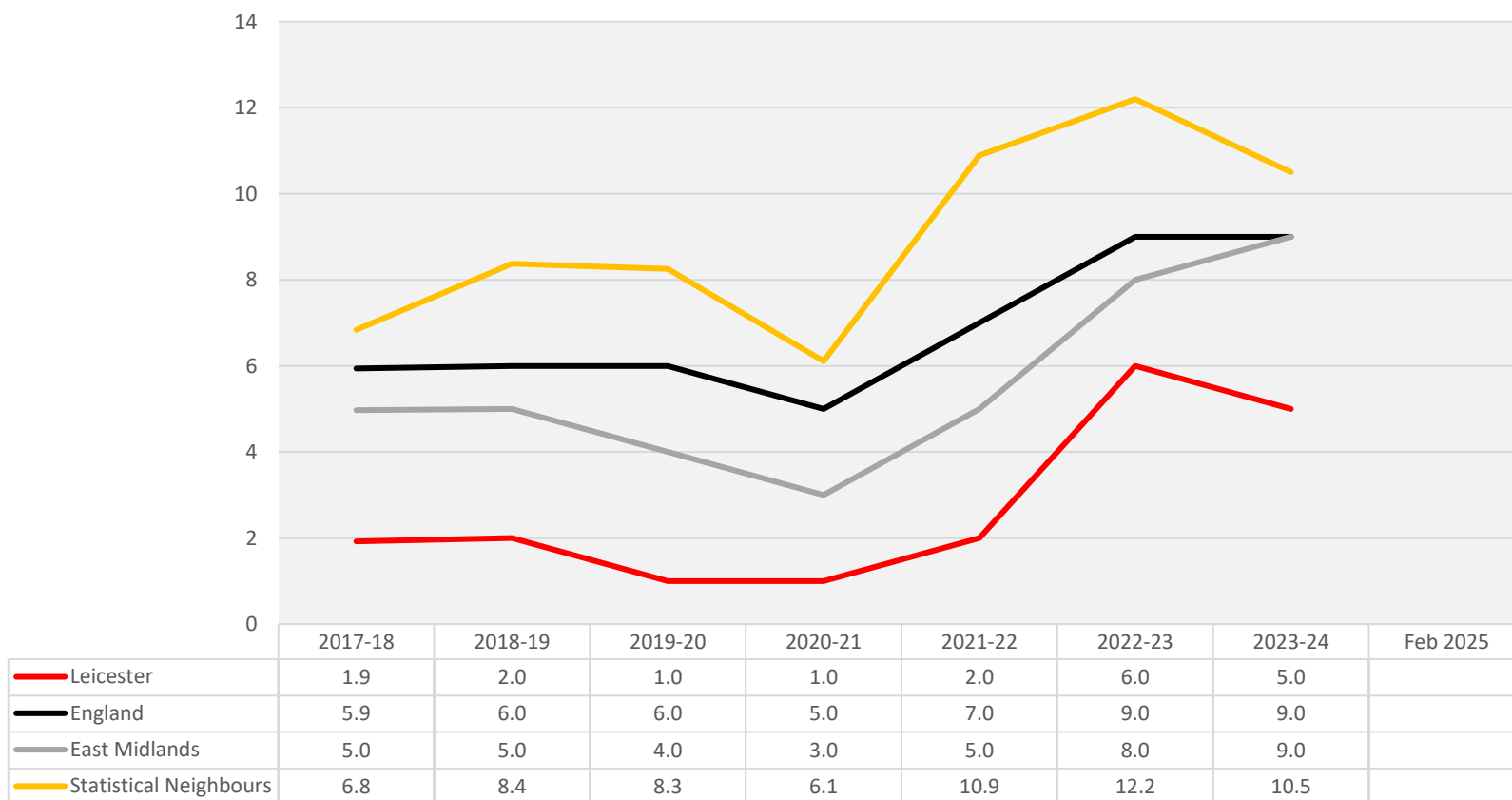
Leicester CLA by Gender



# Children Looked After Population Needs Analysis

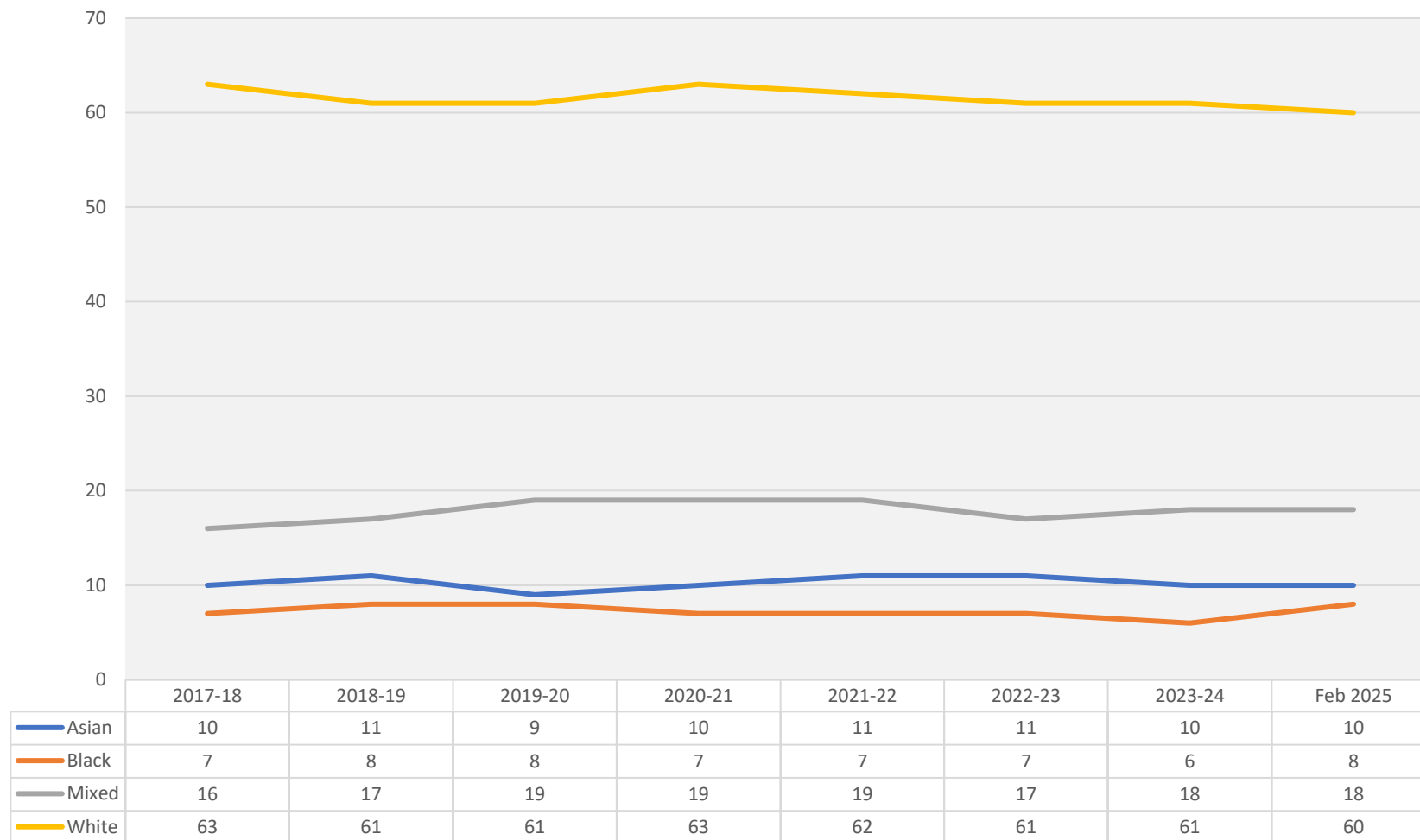
## Ratio of Children from Abroad Seeking Safety has increased but remains below comparators

% CLA being Children from Abroad Seeking Safety



# Children Looked After Population Needs Analysis

## Ethnicity of population group largely stable



## **Children Looked After Needs Analysis - Residential Care**

**Ratio of Leicester children living in residential care is below the national average**

**Number of our children placed in internal & external residential care has increased**

**Number of our children placed in internal residential care is above national average**

**Number of children placed in specialist residential care has increased**

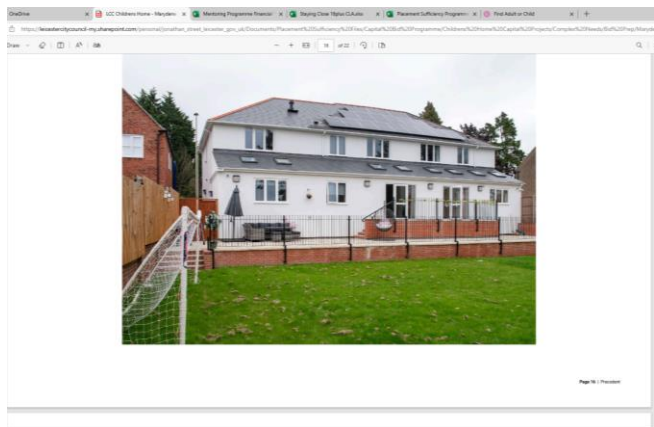
**Average cost of residential placement has increased though below national average**

**Average cost of an internal residential placement is £4627 per week**

**Average cost of an external residential placement is £5414 per week**

**Average cost of specialist residential placement has increased**

**Number of children placed in unregistered placements is lower than average**



# Holly House

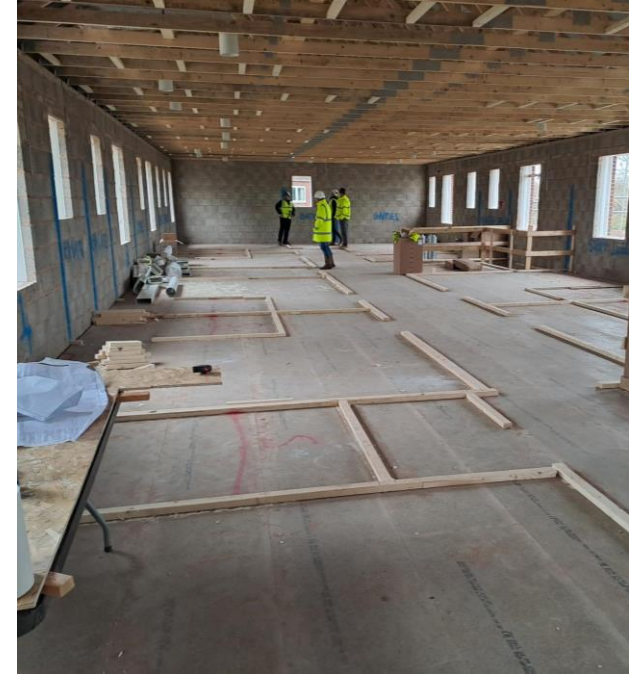
---





# Hillview – Construction In Progress

---



## **Children Looked After Needs Analysis - Fostering**

**Most of our Children Looked After Live in Foster Care Households**

**Ratio of Leicester children living in Foster Care is above the national average**

**Majority of our Children in Foster Care are looked after by our own internal carers**

**Number of our children placed with internal carers is above average**

**Average cost of internal foster care household placement £340 per week**

**A smaller number of children cared for by Independent Fostering Agencies (IFAs)**

**Number of children living in Independent Fostering Agencies has increased**

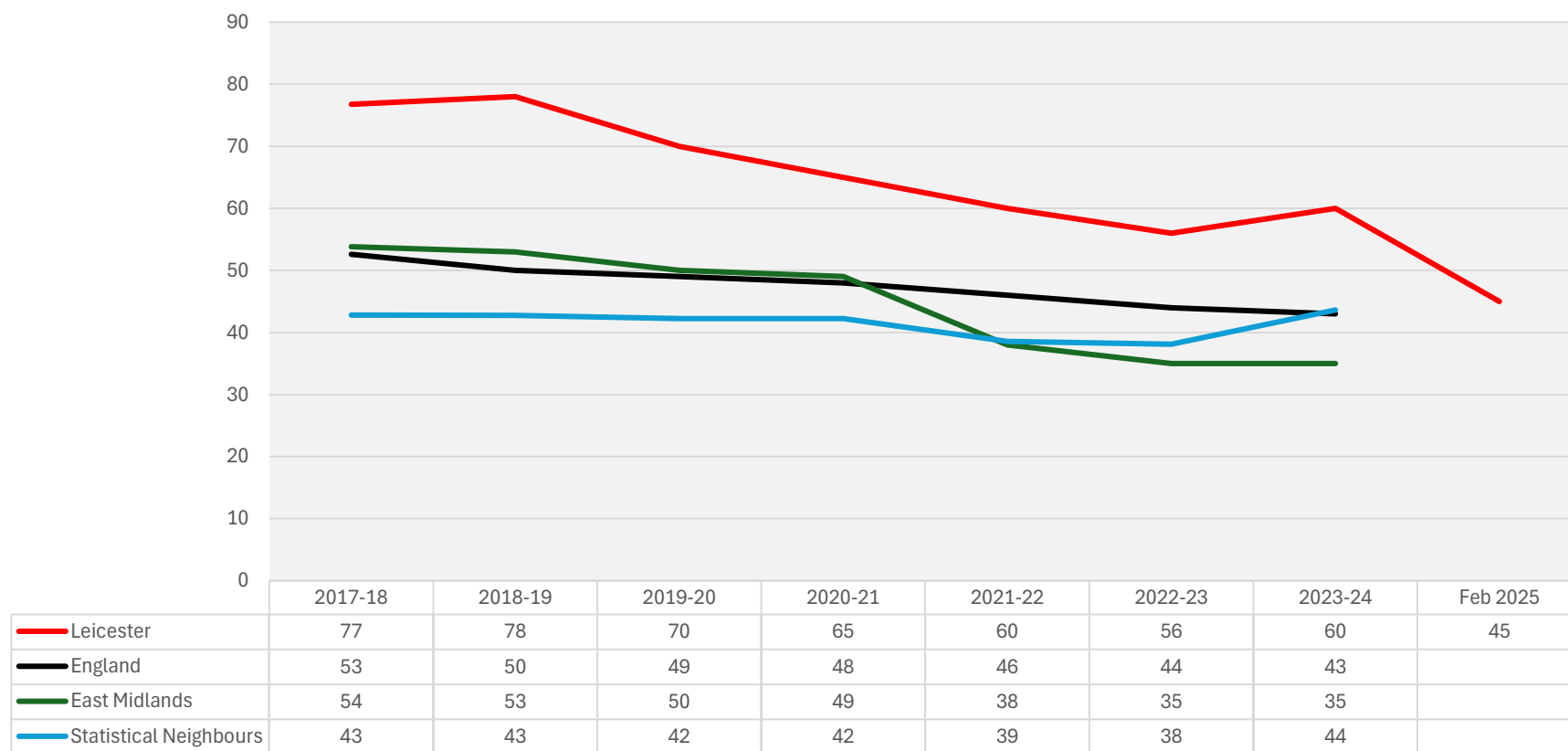
**Number of children placed with IFA is still below the national average**

**Average cost of Independent Fostering Agency Placement £981 per week**

# Children Looked After Population Needs Analysis

**Majority of children in foster care looked after by our own internal carers is reducing but remains above the average**

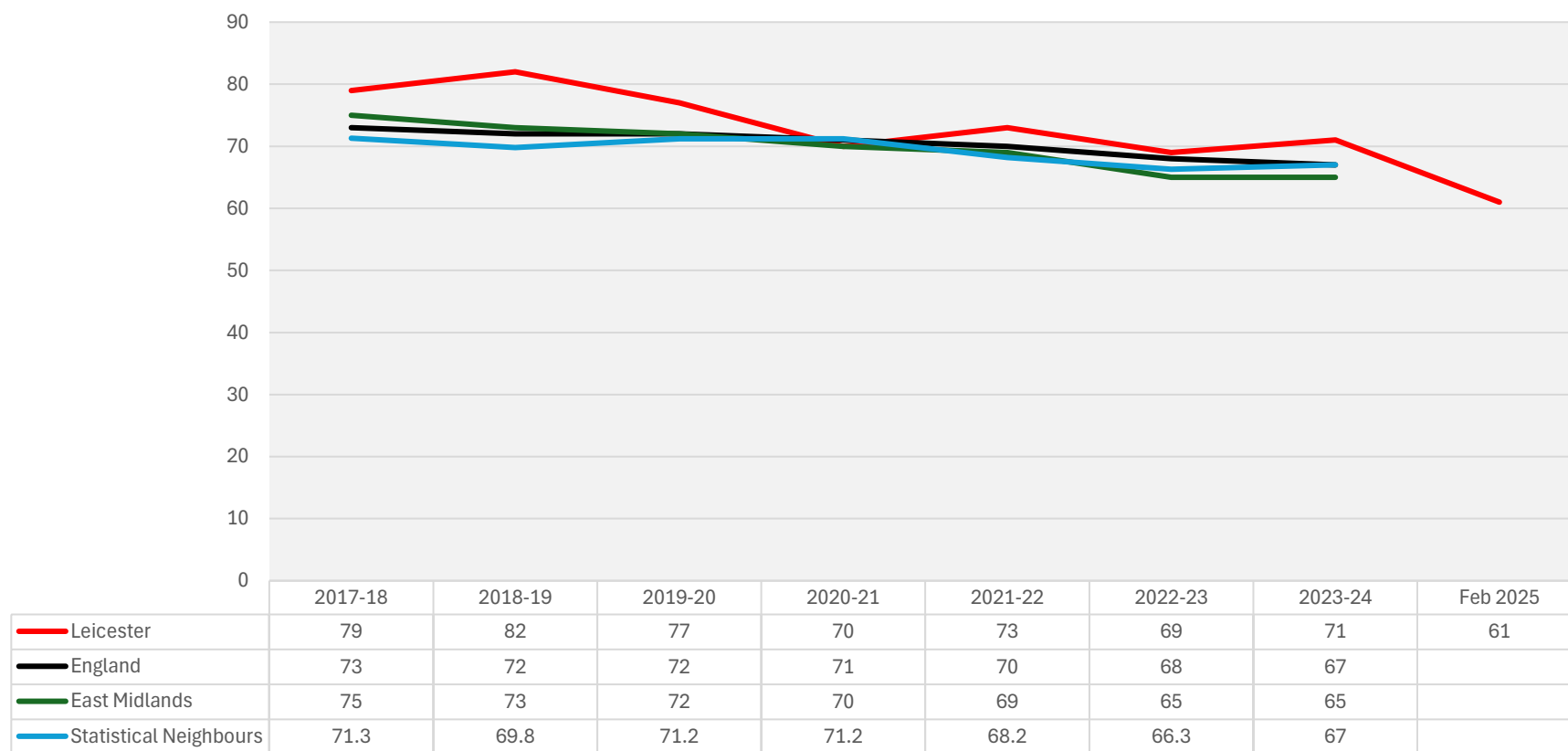
% CLA placed with internal carers



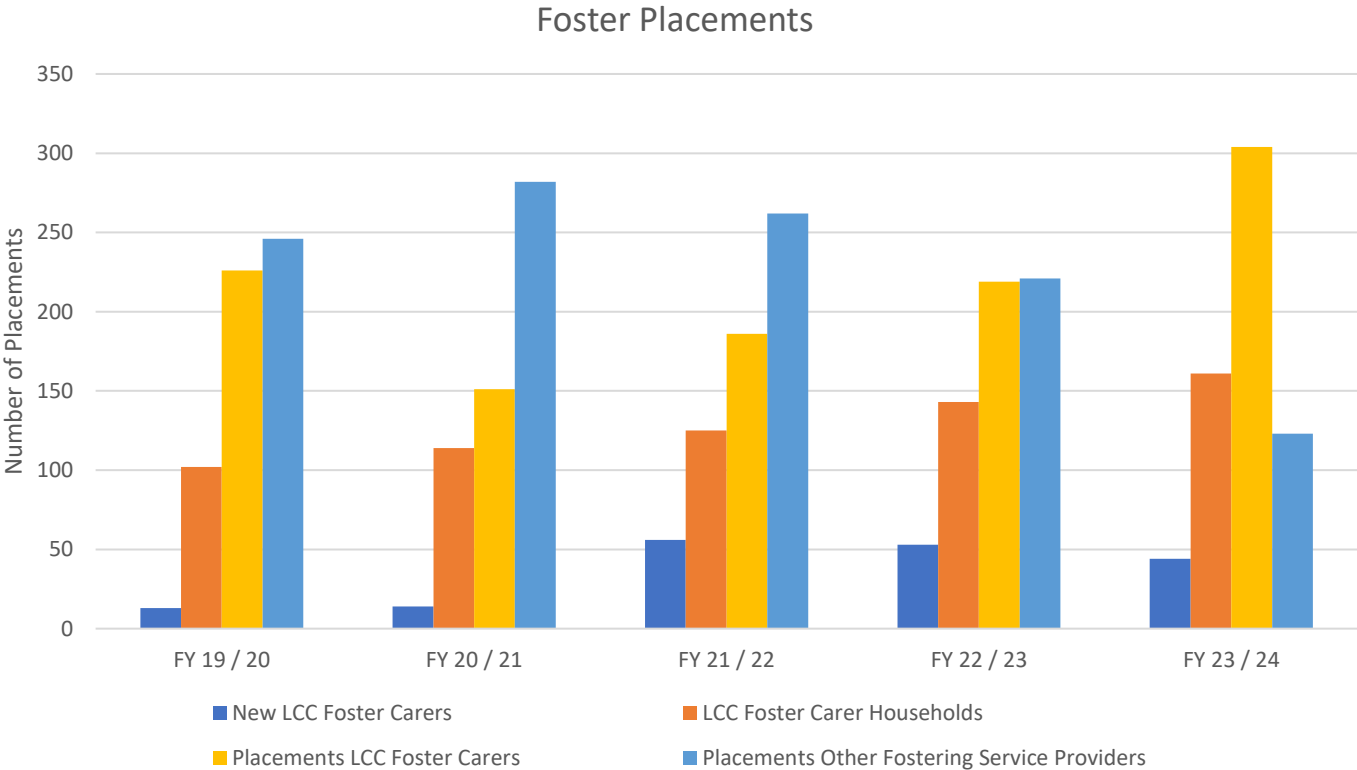
# Children Looked After Population Needs Analysis

Ratio of children living in foster care is down though above national average

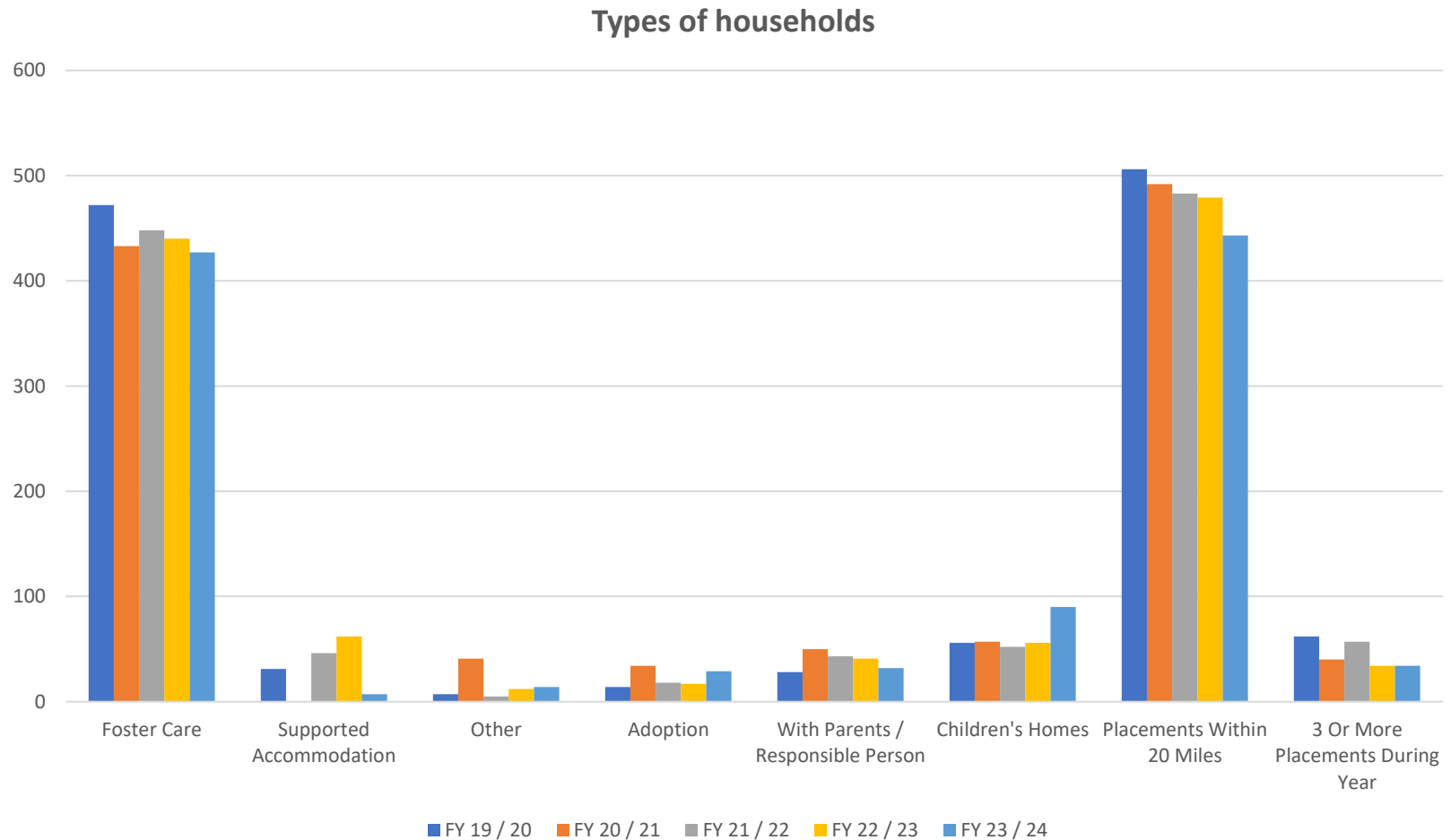
% CLA placed in Foster Placements



# Reducing our use of Independent Fostering Agencies



# Enabling children to live locally in family households



# Recruitment & Retention of Foster Carers

	FOSTER CARE				
	FY 19 / 20	FY 20 / 21	FY 21 / 22	FY 22 / 23	FY 23 / 24
LCC Foster Carers at Start of Year	154	167	229	214	202
New LCC Foster Carers	13	14	56	53	44
LCC Foster Carers at End of Year	167	186	244	226	209
LCC Foster Care Households	102	114	125	143	161
Average Age of Foster Carers	56.5	55.6	54.9	53.8	53.1
Foster Placements	472	433	448	440	427
Foster Placements, LCC Carers	226	151	186	219	304
Foster Placements, Other Providers	246	282	262	221	123