

# SEND & Inclusion Alliance/ Change Programme Partnership (CPP)

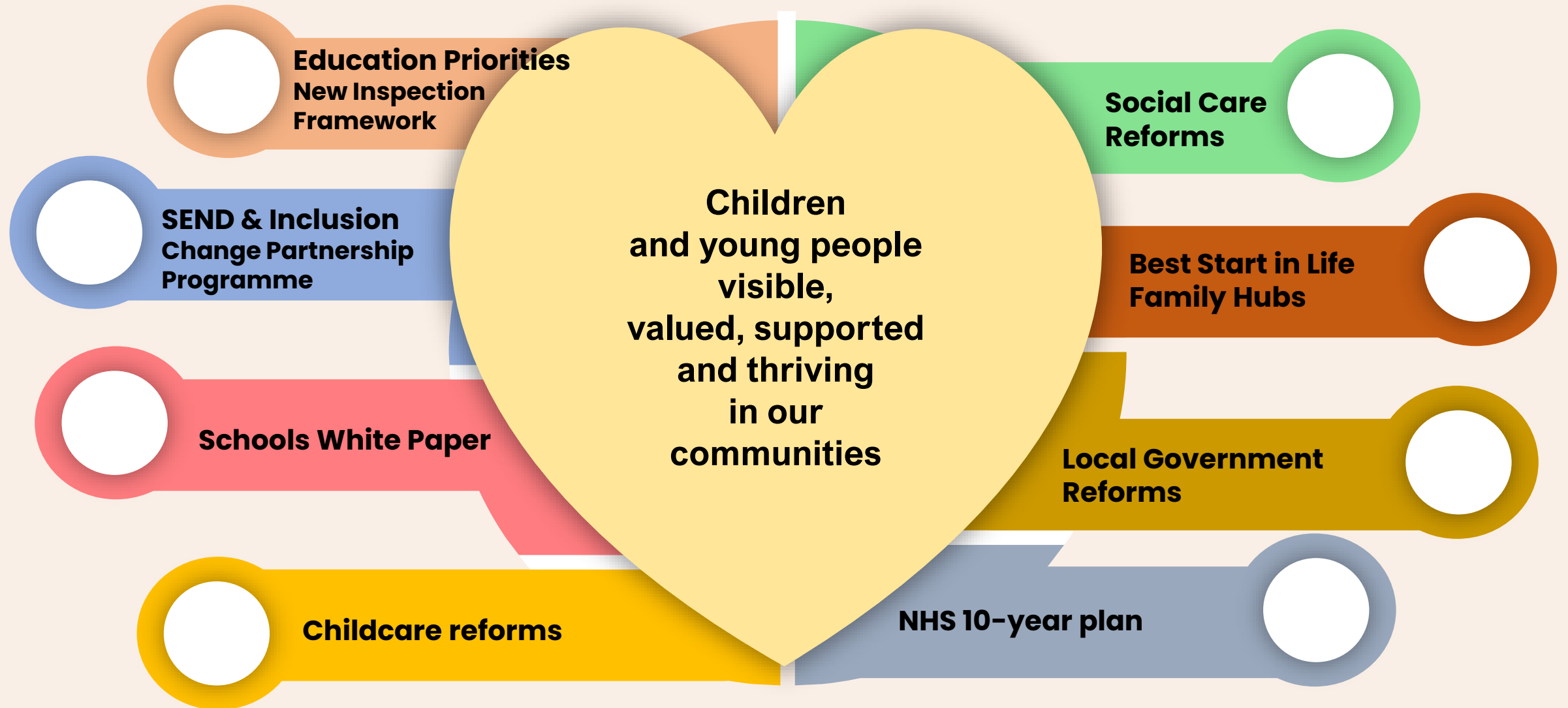
SEND and Inclusion Alliance update  
HWBB November 2025

Jane Pierce – Programme Lead

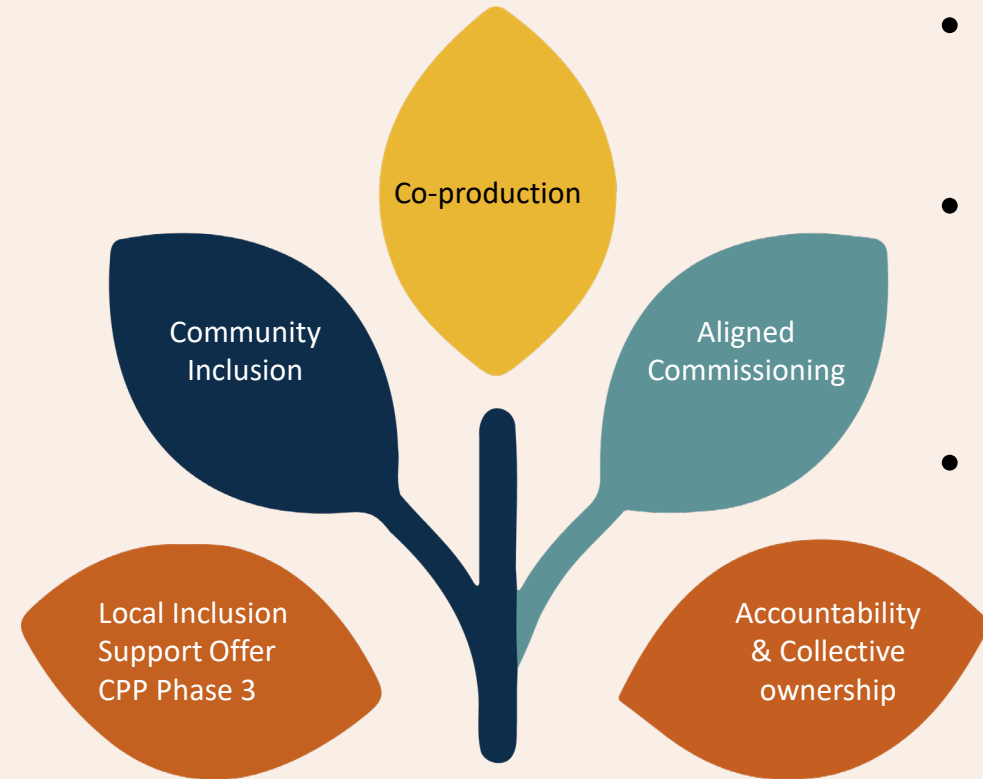
Fay Bayliss – Director  
Mark Roberts - Director



# National reforms context



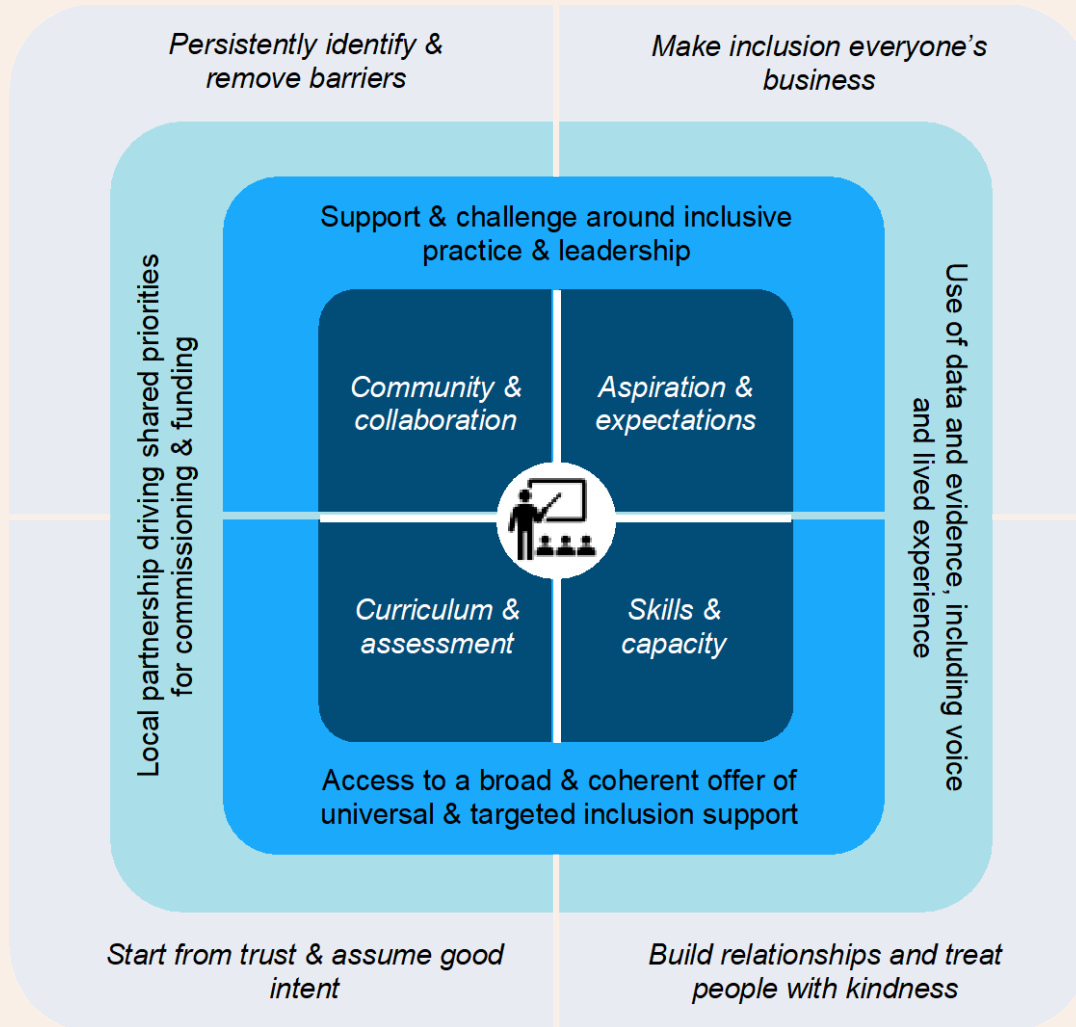
# LLR SEND & Inclusion Alliance: Change Programme Partnership (CPP) phase 3 and beyond



- Co-production is the golden thread that weaves through everything we do
  - The Local Inclusion Support Offer is a multi-disciplinary approach to bridge the gap between specialist and mainstream provision
  - Our community inclusion programme works with LLR communities to support local cyp with SEND to thrive
- Developing our first annual implementation plan of LLR's SEND Joint Commissioning Strategy. First priorities are developing and commissioning a cohesive LISO
- Having these building blocks in place will facilitate collective ownership and strengthen accountability

# DfE intention: Building blocks of an inclusive system

## 'Working model' of an inclusive system



## Layers of the model:

**Inclusive settings & providers** – moving all settings and providers towards a shared understanding and consistent practices around inclusion

**Structures & services to strengthen inclusion** – improving collaboration between settings and with specialist services available locally to build universal and targeted capacity

**System leadership & local partnership** – putting in place the enabling conditions across a local area that ensures planning and provision reflects the local area & is joined up

**Consistently inclusive culture & behaviours** – shifting mindsets through practical actions and shared accountability towards a system that works for children and families

# Change Programme Partnership – LISO at the heart of phase 3

- Local areas are testing how inclusion is strengthened across their education settings through a **Local Inclusion Support Offer (LISO)** around

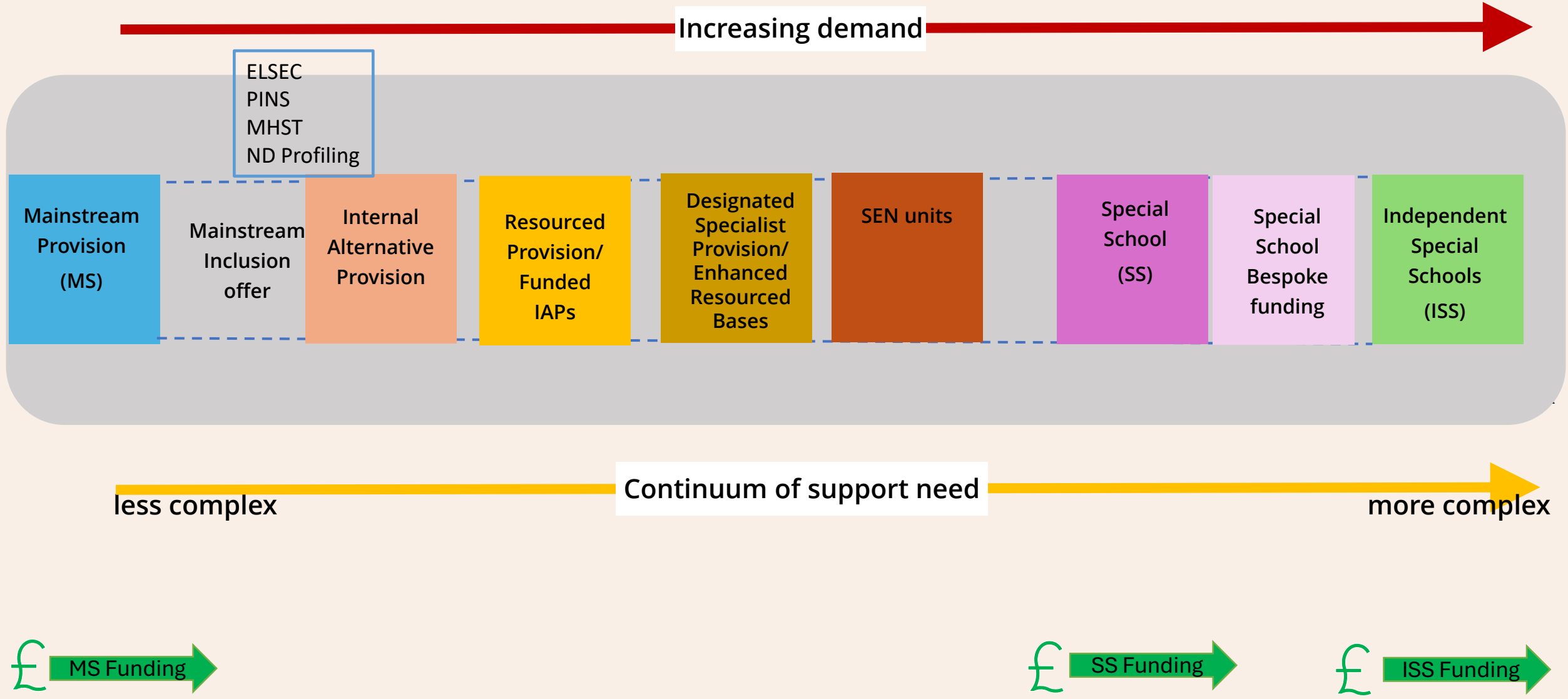
- Advice
- Training
- Direct Support

- ★ Funding to test additional themes to inform policy development
- Tight timescales and commitment to spend by end of March 2026



# Continuum of SEND Provision

**2025** Expanding and Developing



# CPP phase 2 IMPACT – to meet needs at the right time

- Embedding 3 tier AP model
- AP handbook guide (co-produced with school reps) across the city
- A digital solution is being developed to enable services to monitor and quality assure AP placements

## Alternative Provision

Meeting need

- Over 400 children with lower-level speech and language needs have been supported.
- A speech & Language toolkit launched across LLR
- ELSEC continues with focus on areas of high deprivation

## ELSEC

Speech & Language

- 40 LLR Primary Schools participated.
- Helped bridge gaps in relationships between schools and parents and enabled parents/carers to create support groups with schools
- E-learning available for all schools
- Plan to extend to secondary schools

## PINS

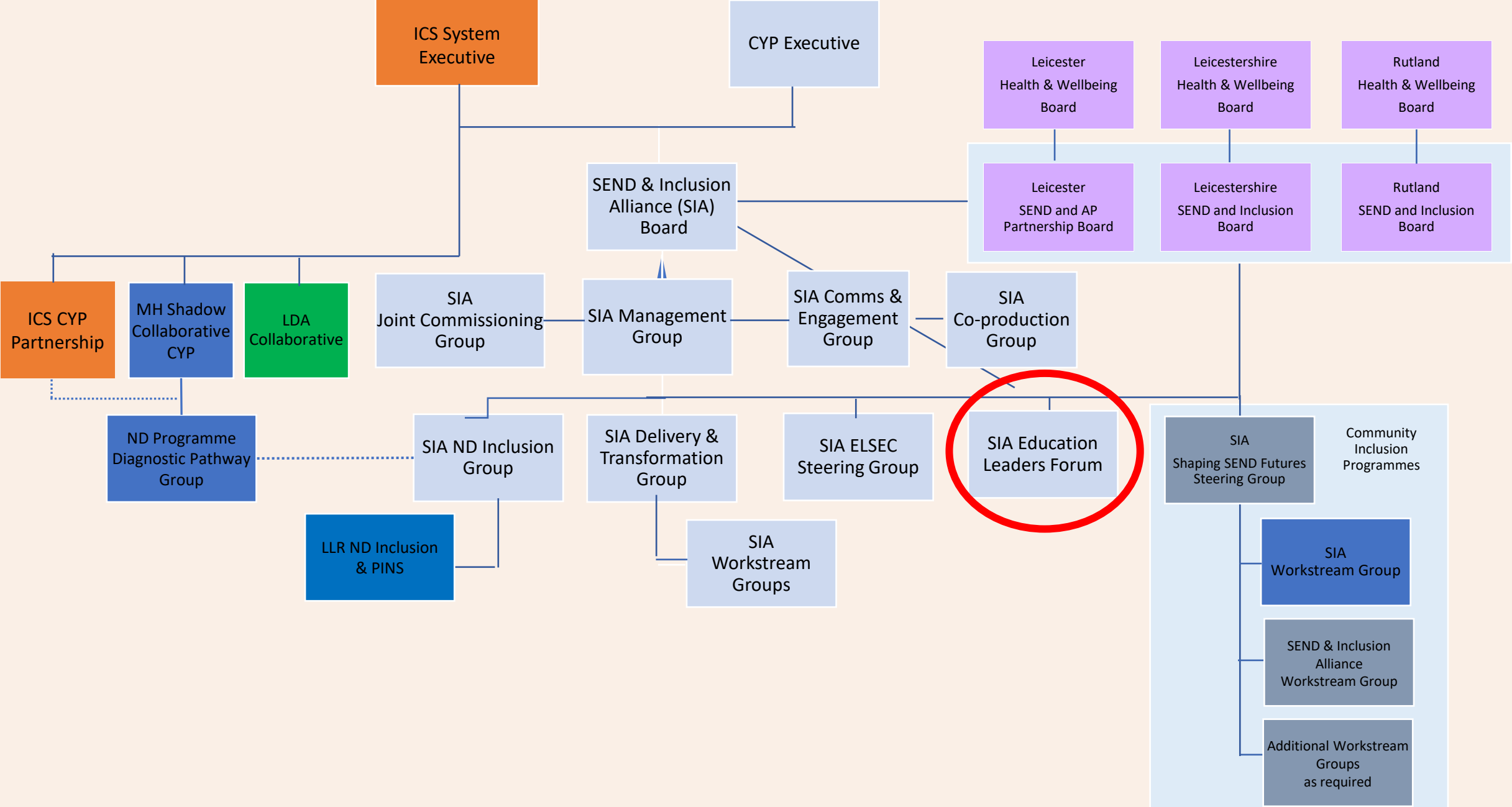
Neurodivergence

- Lead by Headteacher of Imperial Avenue. Over 64 Leicester primary schools signed up to this new network
- Providing advice and quality assuring provision
- As network grows, more schools interested in developing onsite internal AP to enhance Mainstream inclusion offer across the city

## Internal Alternative Provision

Inclusion

# SEND and Inclusion Alliance 2025/26 v8.5





# LLR Co-production Charter

Coproduction involves individual and community voices working together in respectful partnership to improve lives.



## We respect and trust everyone in the process

We support and enable everyone to be heard

We are clear on the way forward and act on what has been agreed

We are honest, respect confidentiality and try to understand everyone's circumstances and point of view



## We work in partnership

We welcome and value everyone's views

We seek honest and transparent feedback

We understand that our different roles, responsibilities and perspectives are the key to good coproduction



## We communicate well

We listen to everyone's views

We feed back to everyone about what we have heard and what we have done

We make sure all communication is simple, accurate and easy to understand

We give everyone the information and support they need to participate



## We are inclusive

We make everyone feel welcome, comfortable and that they belong

We give everyone the time and space to be heard

We make sure that everyone can participate – for example meeting venues are accessible, we meet at suitable times, we provide interpreters where we can

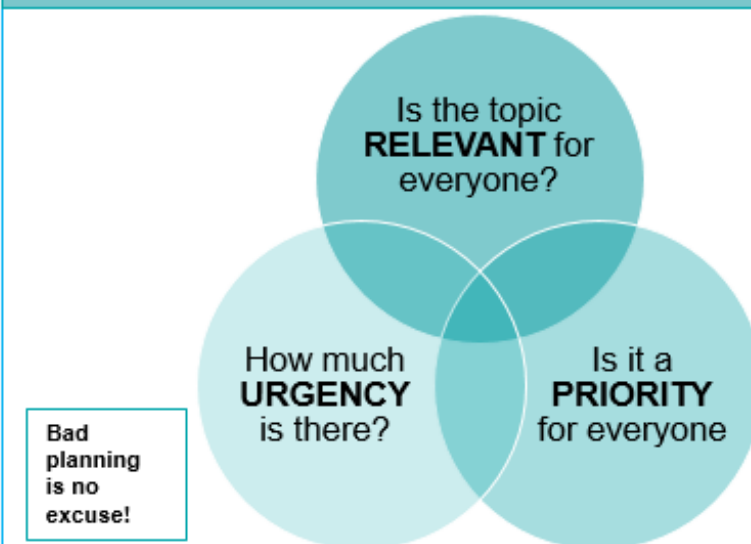
## Coproduction should happen at all levels:

- Individual
- Operational
- Strategic

## Coproduction should cover all relationships:

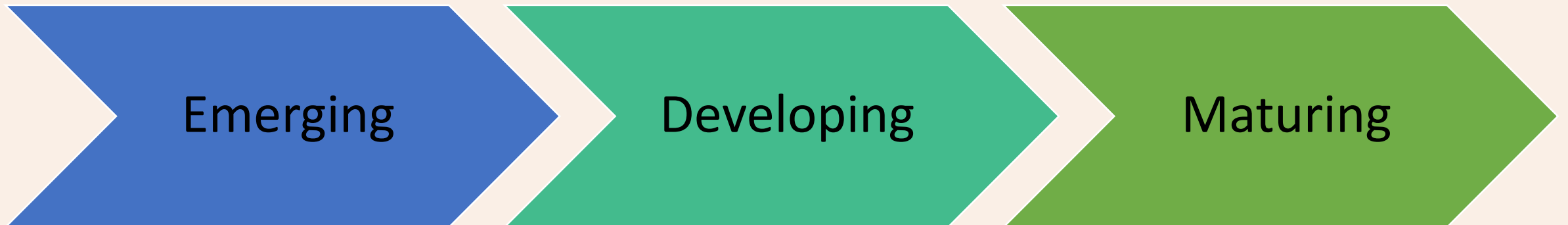
- Practitioners (inc schools) to parents and CYP
- Commissioners to parents and CYP
- Commissioners to practitioners
- Providers to other practitioners
- Parents and CYP with other parents and CYP

## We seek to coproduce as much as possible but need to consider:



# Change Programme Partnership - Test of SEND Local Partnership Maturity Assessment

- A DfE tool designed to support Local SEND and Inclusion partners to evaluate and enhance current practice in a structured way
- There are seven principles putting outcomes of children and young people (CYP) at the heart of strategic planning and commissioning
- Descriptors for each principle help frame partnership arrangements and practices against a scale of maturity, to support a system shift towards inclusion



# Local Partnership Maturity Assessment tool

- 1 Co-production with parents/carers and CYP (p4)
- 2 Understanding and evidencing the needs of CYP with SEND and those CYP who may need AP (p6)
- 3 A clear focus on early identification, intervention and inclusion in mainstream settings through improving mainstream inclusion (p9)
- 4 Creating collaborative relationships with providers of early years, school and FE places, specialist provision, CYP health services for 0-25 and social care services and the local authority (p12)
- 5 Improving outcomes-based accountability through transparency, communication and trust (p16)
- 6 Using a range of sources to monitor effectiveness and enable continuous improvement, ensuring a targeted, judicious and sustainable use of resources (p19)
- 7 Driving strategic decision making at the right level (p17)

- Use of assessment tool supported by REACh (CPP delivery partner)