

The background features abstract, overlapping geometric shapes in various shades of green, ranging from light lime to dark forest green. These shapes are primarily located on the left and right sides of the page, framing the central text. The overall aesthetic is clean and modern.

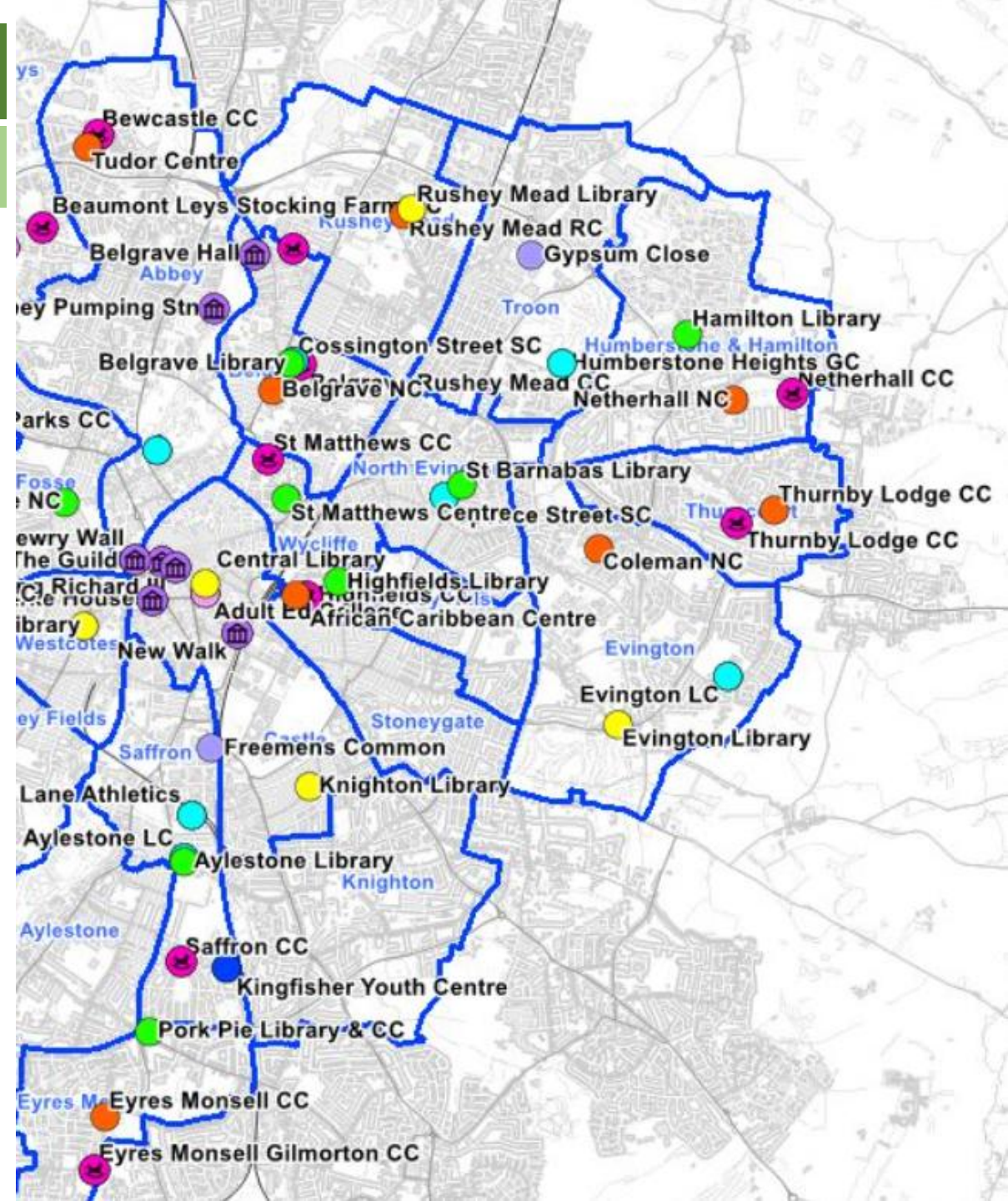
Neighbourhood and Environmental Services JUNE 2026

Scrutiny Report

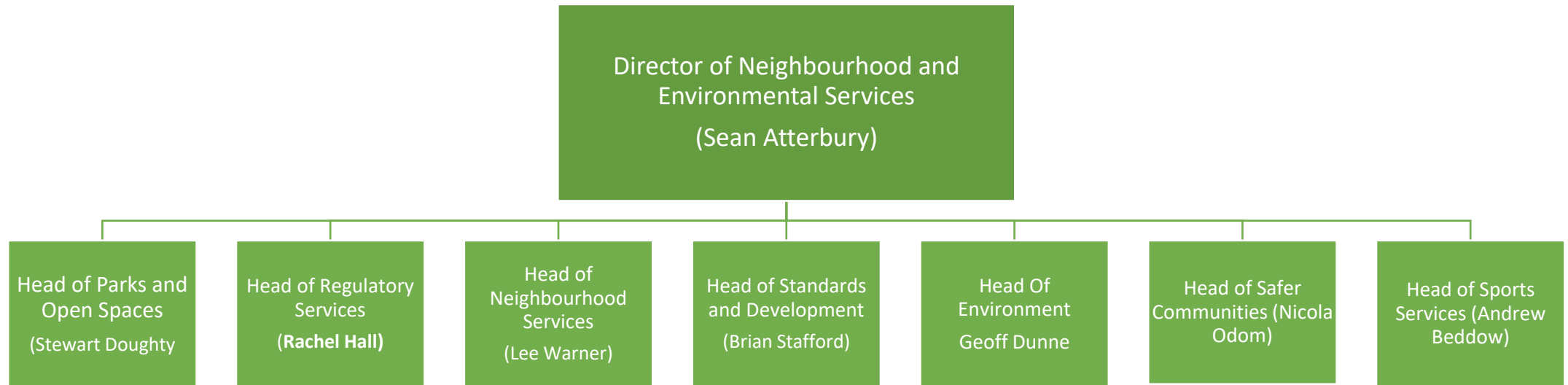
Neighbourhood & Environmental Services

Scrutiny Overview

- Is the largest division of City Development and Neighbourhoods
- Provides services that support residents across the city and in our communities
- Is not just about places, but also about people
- Contributes to the health and wellbeing of society through its services and the opportunities it provides



Divisional Structure



Neighbourhood & Environmental Services

Scrutiny Overview

Headline responsibilities

Parks and open spaces	Regulatory Services	Standards and Development	Neighbourhood Services	Environmental Services	Safer Communities	Sports Services (Active Leicester)
<ul style="list-style-type: none">• Trees• Bereavement• Volunteers• Grounds maintenance	<ul style="list-style-type: none">• Trading standards• Taxi• Licensing and enforcement• Private Sector Housing• Selective Licensing• Food• Noise	<ul style="list-style-type: none">• Allotments / community growing spaces• City Wardens• Fly tipping• EnviroCrime• Landscape development• Pest and Dogs	<ul style="list-style-type: none">• Library services• Reader development• Childrens Book bus• Neighbourhood Centres• Ward funding schemes	<ul style="list-style-type: none">• Biffa PFI contract• Street cleansing• Household waste site operations• Bulky waste administration• Waste Strategy development• Waste education	<ul style="list-style-type: none">• Community Safety Team• Public Spaces team• Prevent• Changing futures• Community Safety partnership	<ul style="list-style-type: none">• Leisure Centre provision• Athletics• Outdoor recreation• City wide strategy development

For this year

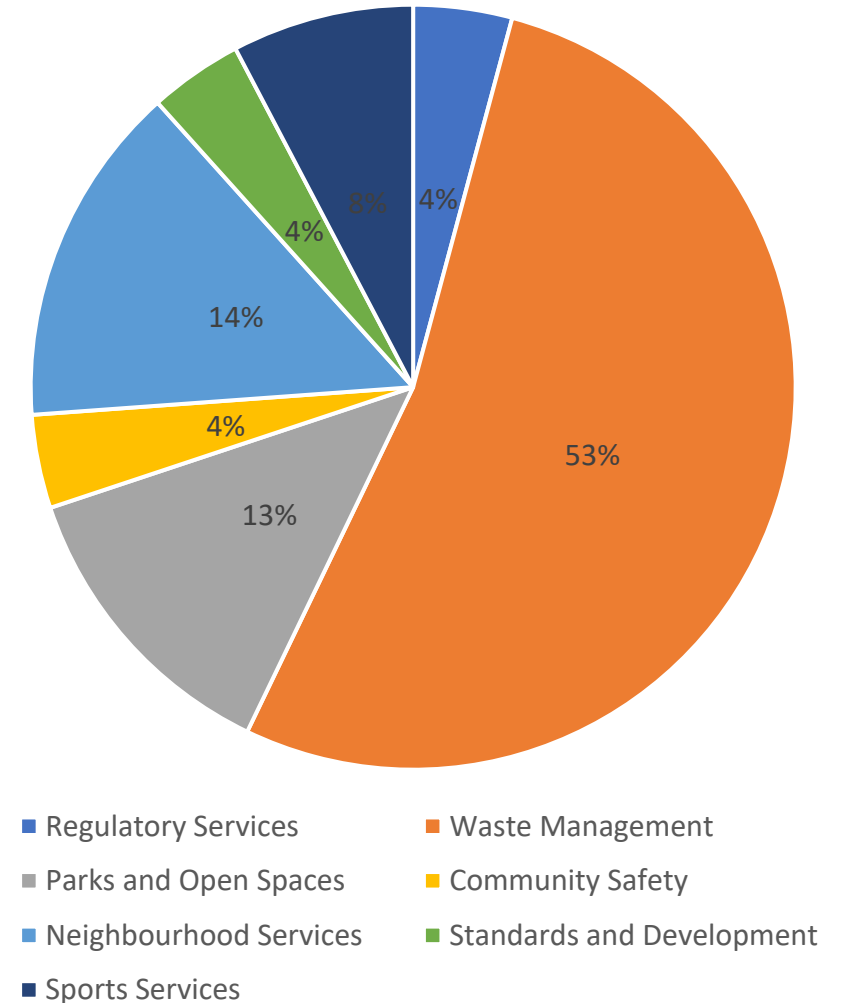
Neighbourhood & Environmental Services

Scrutiny Overview

Net Budget breakdown

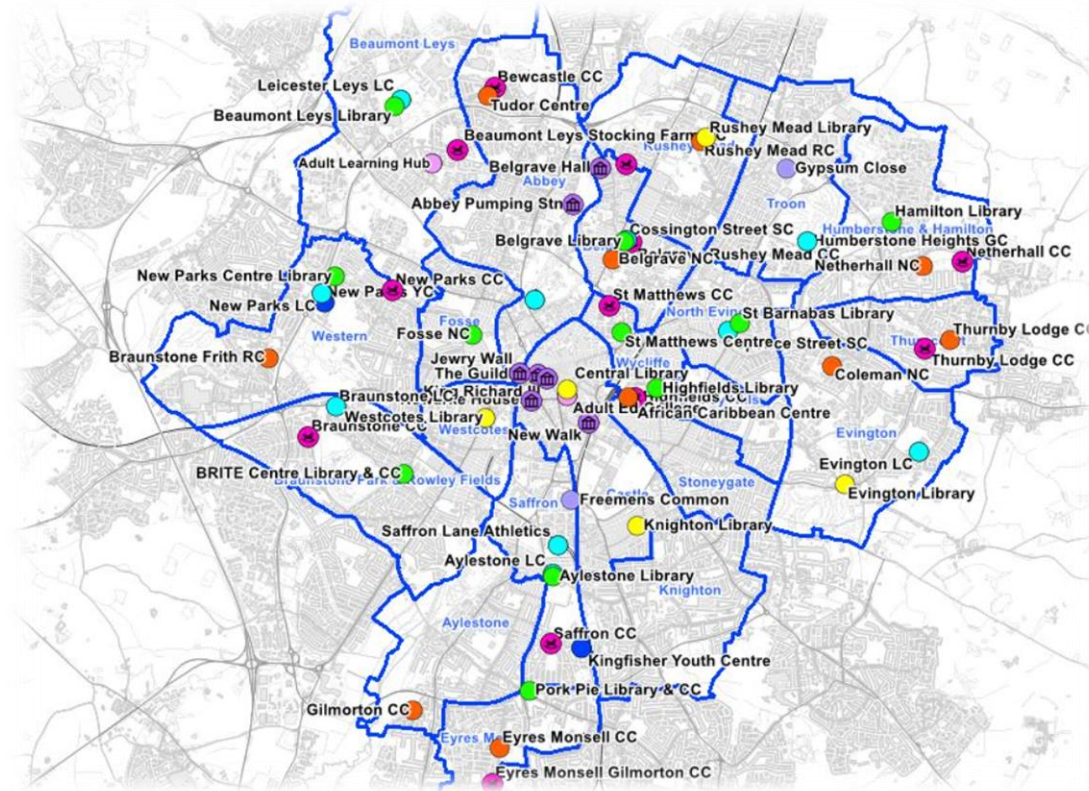
Service	
Regulatory Services	£1.9m
Waste Management	£24.1m
Parks and Open Spaces	£5.8m
Safer Communities	£1.8m
Neighbourhood Services	£6.6m
Standards and Development	£1.8m
Sports Services	£3.5m
Overall	£45.5m

Budget breakdown



Neighbourhood & Environmental Services

Scrutiny Overview



Questions