

## Westcotes

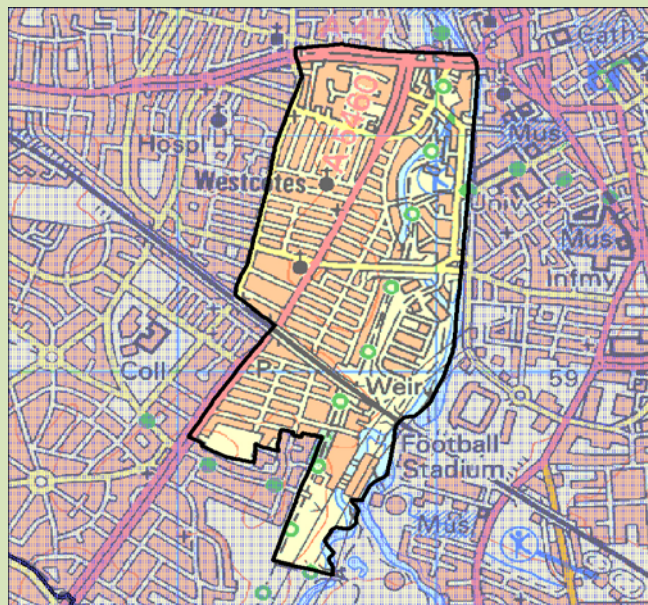
In Leicester overall, health outcomes are generally worse than the England average. Leicester is the 25th most deprived area of 326 (Local Authority areas) and life expectancy for men and women in Leicester is lower than the England average.



*This profile looks at the health profile of the population in Westcotes:*

### Westcotes at a glance

- The health of people in Westcotes is generally worse than England average
- Deprivation is lower than the Leicester average and an estimated 566 children live in poverty
- For Males, life expectancy is 2.1 years lower than the Leicester average (75.4 years) and 5 years lower than the England average for men (78.3 years)
- For Females, life expectancy is 2.6 years lower for than the Leicester average (80.0 years) and 5 years lower than the England average for women (82.3 years)
- Over the past few years, death rates from all causes in Westcotes have fallen, but at a slower rate than in both Leicester and England. The ward rate is currently worse than both England and Leicester
- The two biggest causes of death are cardiovascular disease (CVD: heart disease and strokes), and cancer:
- Early death rates (in under 75 year olds) from CVD have fallen at a faster rate than in both Leicester and England. The ward rate is currently worse than England but better than Leicester
- For cancer, early death rates (in under 75 year olds) have increased. The ward rate is currently worse than both England and Leicester
- In this ward birth rates are similar to than in England. Teenage conception rates are higher and infant mortality rates similar to England. Rates of smoking during pregnancy are similar to England, and initiation of breastfeeding similar to the England average
- Of lifestyle factors which impact on health, levels of smoking, physical activity, healthy eating and drinking alcohol are worse than average while obesity is better than Leicester overall



Digital Mapping Solutions from Dotted Eyes © Crown copyright 2011  
All rights reserved. Licence number 100019918

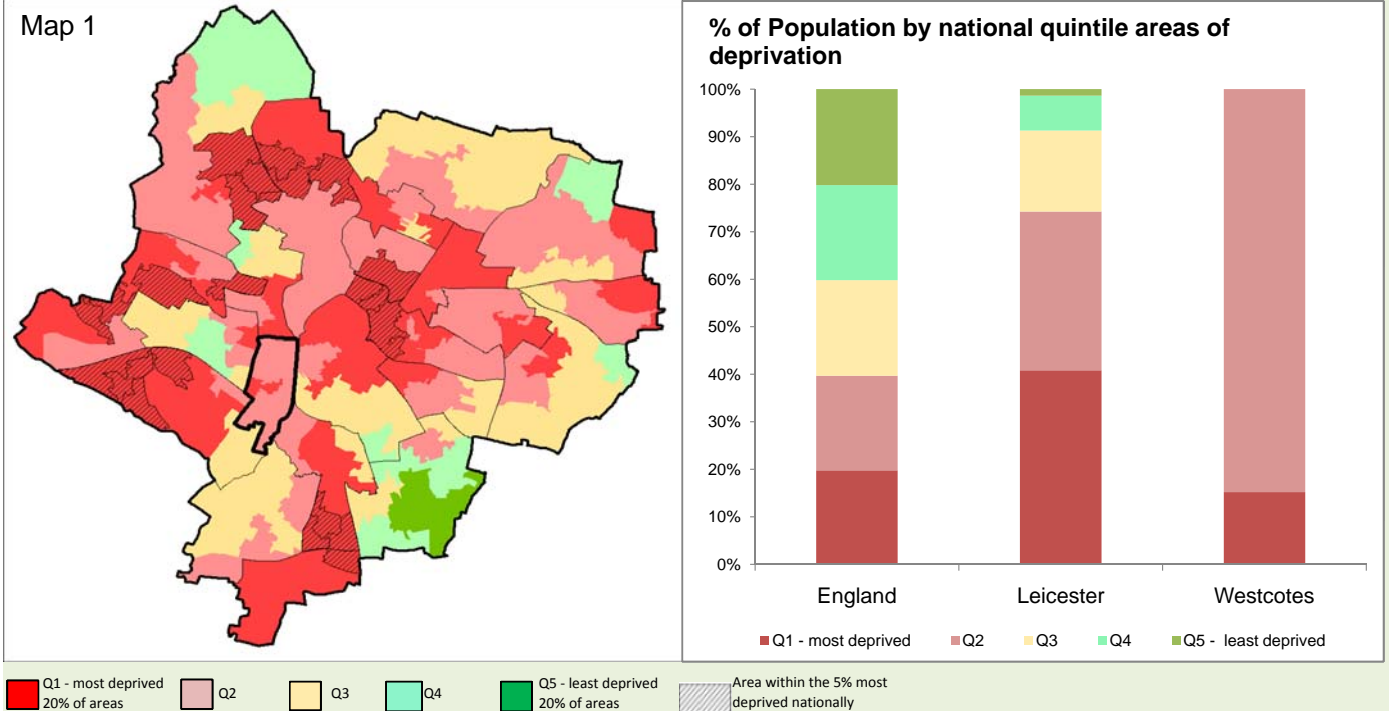


## Deprivation: a national view

Leicester is the 25th most deprived of 326 Local Authority areas based on the Index of Deprivation 2010. Deprivation is widespread in Leicester and overall 41% of Leicester's population live in the fifth most deprived of areas (Q1 on map 1), compared with 20% of the population nationally.

Map 1 shows the extent of deprivation in Westcotes ward and Leicester, based on national quintiles of the Index of Deprivation 2010 by Lower Super Output Area (LSOA). 23 LSOAs in Leicester are within the 5% most deprived in England.

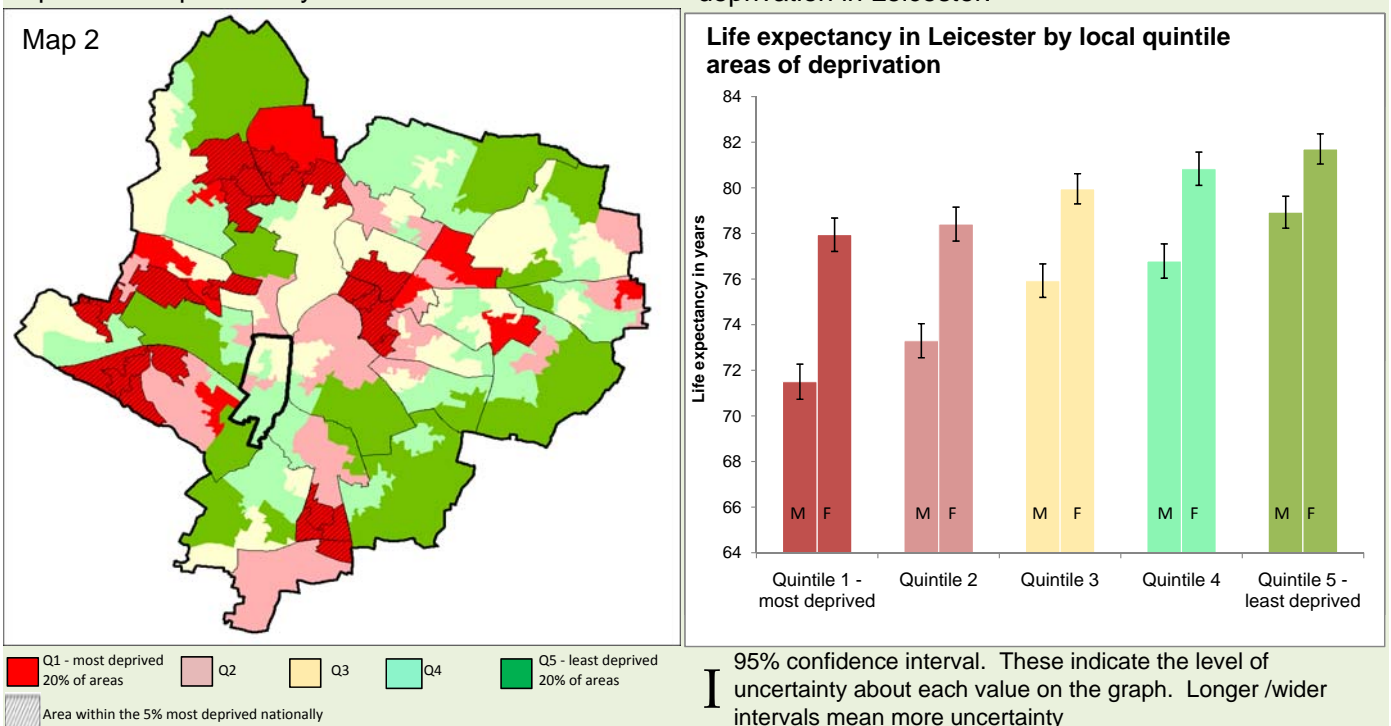
This chart shows the percentage of the population in Westcotes for each of the national quintiles of deprivation, compared with Leicester and England.



## Deprivation: a local view

Map 2 shows differences in relative deprivation levels within Leicester itself and helps show where deprivation is particularly severe.

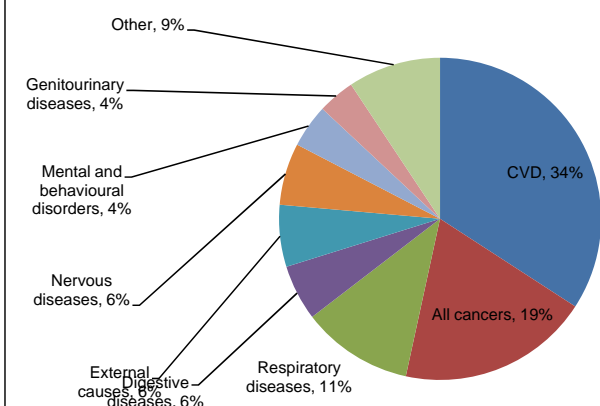
This chart shows life expectancy at birth for males and females (2005-2009) for each of the local quintiles of deprivation in Leicester.



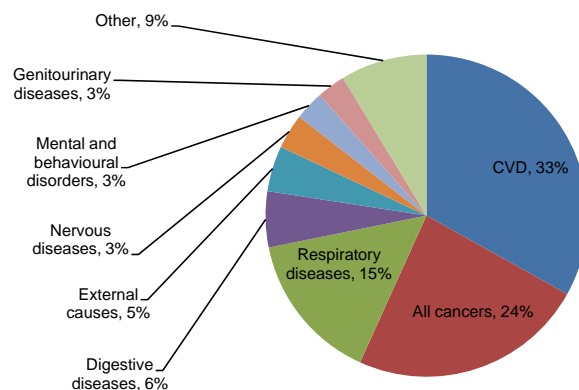
## Main causes of death

These charts show how the main causes of death compare for this area and Leicester overall.

**Main causes of death in Westcotes, all Persons, 2007-09**



**Main causes of death in Leicester, all Persons, 2007-09**



## Health Inequalities: changes over time

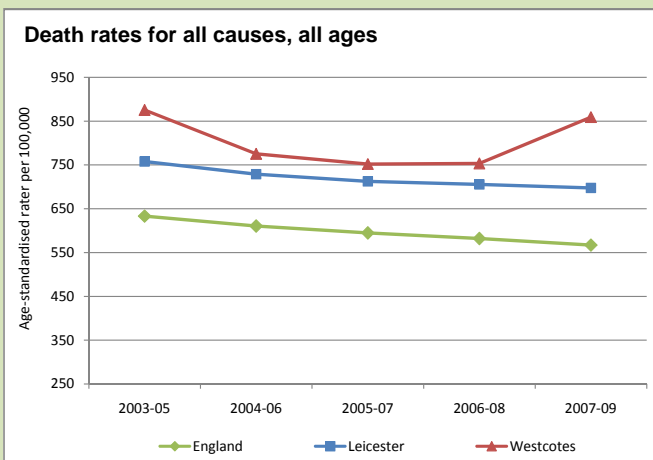
These graphs show how changes in death rates for Westcotes compare with changes for Leicester and England. Rates are age-standardised to allow comparisons between different areas, and are average annual rates (based on 3 years of data).

Trend 1 shows that death rates for all ages and from all causes in Westcotes have fallen, but at a slower rate than in both Leicester and England. The ward rate is currently worse than both England and Leicester

Trend 2 shows that early death rates (under 75 year olds) from CVD have fallen at a faster rate than in both Leicester and England. The ward rate is currently worse than England but better than Leicester

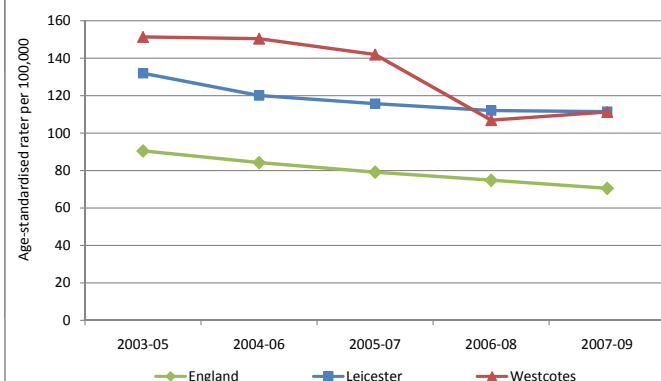
Trend 3 shows that for cancer, early death rates (in under 75 year olds) have increased. The ward rate is currently worse than both England and Leicester

Trend 1:



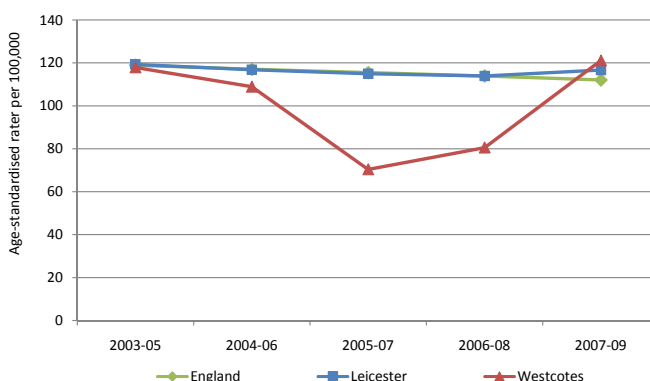
Trend 2:

**Early death rates from CVD**



Trend 3:

**Early death rates from cancer**

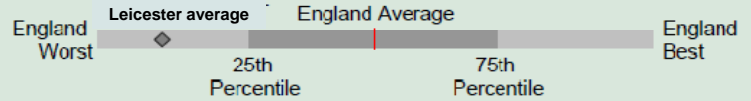


# Health summary

The chart below shows how the health of people in Westcotes compares with the rest of Leicester and England.

The indicator results for Westcotes are shown as traffic light circles. For all indicators except 18-22, the red line shows the average rate for England and the grey bar shows the range of results for all areas in England. For Indicators 18-22 the red line represents the Leicester average, the grey bar represents the range of results for Leicester and the traffic light circles represent comparisons with the Leicester average.

- Significantly worse than England average
- Not significantly different from England average
- Significantly better than England average
- No significance can be calculated



Domain	Indicator	Local No. Per Year	Local Value	Nat. Avg	Nat. Worst	National Range	Nat. Best
Our Communities	1 Deprivation	3621	30.4	15.1	77.6	[Bar chart showing Leicester average significantly worse than England average]	1.2
	2 Proportion of children in poverty %	566	34.0	20.9	63.8	[Bar chart showing Leicester average significantly worse than England average]	0.6
	3 GCSE achieved (5A*-C)	18	45.0	53.0	37.8	[Bar chart showing Leicester average not significantly different from England average]	70.9
	4 Violent crime	awaiting data					
Life expectancy and causes of death	5 Long term unemployment %	70	1.0	0.5	1.8	[Bar chart showing Leicester average significantly worse than England average]	0.1
	6 Life expectancy - males	n/a	73.3	79.3	73.7	[Bar chart showing Leicester average significantly worse than England average]	84.4
	7 Life expectancy - females	n/a	77.3	82.3	79.1	[Bar chart showing Leicester average significantly worse than England average]	89.0
	8 Early deaths from CVD	5	111.2	66.2	122.1	[Bar chart showing Leicester average significantly worse than England average]	37.9
	9 Early deaths from cancer	6	119.3	112.1	159.1	[Bar chart showing Leicester average not significantly different from England average]	31.4
	10 Deaths from COPD	2	46.3	26.2	48.7	[Bar chart showing Leicester average not significantly different from England average]	11.9
Pregnancy, infant and child health	11 Infant Mortality	1	6.7	4.7	14.7	[Bar chart showing Leicester average not significantly different from England average]	0.7
	12 Perinatal Mortality	7	17.0	7.6	14.7	[Bar chart showing Leicester average not significantly different from England average]	7.0
	13 Low birthweight babies	13	8.0	7.5	10.7	[Bar chart showing Leicester average not significantly different from England average]	5.6
	14 Smoking in Pregnancy	30	17.9	14.0	31.4	[Bar chart showing Leicester average not significantly different from England average]	4.4
	15 Breast feeding Initiation %	136	81.0	72.8	39.9	[Bar chart showing Leicester average not significantly different from England average]	93.0
	16 Obese children in Year 6 %	12	25.5	18.7	28.6	[Bar chart showing Leicester average not significantly different from England average]	12.1
	17 Teenage Pregnancy (under 18s)	n/a		41.0	74.5	[Bar chart showing Leicester average not significantly different from England average]	21.8
Adult's Health and Lifestyle	18 Adults who smoke %	n/a	35.9	25.5	43.2	[Bar chart showing Leicester average not significantly different from England average]	9.3
	19 Physically active adults %	n/a	73.2	85.0	73.2	[Bar chart showing Leicester average not significantly different from England average]	94.1
	20 Adult obesity %	n/a	7.7	19.2	32.1	[Bar chart showing Leicester average not significantly different from England average]	7.7
	21 Healthy eating adults %	n/a	20.7	22.9	10.2	[Bar chart showing Leicester average not significantly different from England average]	32.6
	22 Adults drinking over recommended levels %	n/a	42.9	27.3	42.9	[Bar chart showing Leicester average significantly worse than England average]	10.2
	23 Alcohol-related hospital admissions	161	2184.0	1582.7	2856.4	[Bar chart showing Leicester average significantly worse than England average]	784.3

### Limitations:

- a) Data at small areas such as wards will be less reliable than for larger areas. This is because small changes in numbers can result in larger changes in the indicator values (rates, percentages etc). Therefore, the local values are statistically tested to see whether they are significantly higher/lower or no different to the national values.
- b) Due to technical reasons, if the ward value is higher or lower than the England range the circle may be outside the area of the graph and therefore will not be displayed.

3 indicators are worse than the range for England; Life expectancy - males, Life expectancy - females, Teenage Pregnancy (under 18s)

### Indicator Notes

1 % of people in this area living in 20% most deprived areas in England, Index of deprivation 2010 2 % of children in families receiving means-tested benefits & low income 2008 3 % achieving GCSE 5A\*-C inc. English and Maths, 2009-10 4 Violent Crime 5 Proportion of resident population aged 16-64 claiming Job Seekers allowance for previous 12 months (to May 2011) 6 Life expectancy at birth for males 2007-09 7 Life expectancy at birth for females 2007-09 8 Directly age-standardised mortality rates from cardiovascular disease in under 75s, 2007-09 9 Directly age-standardised mortality rates from cancers in under 75s, 2007-09 10 Directly age-standardised mortality rates from Coronary Obstructive Pulmonary Disease, 2007-09 11 Number of deaths in infants under 1 year old per 1,000 live births 2005-09 12 Number of stillbirths and deaths under 7 days old per 1,000 total births 2005-09 13 % of live and still births less than 2,500 grams 14 % of Mothers smoking in Pregnancy (UHL) 2009-10 15 % of Mothers initiating breastfeeding (UHL) 2009-10 16 % of obese school children in year 6 2009-10 17 Number of conceptions in under 18s per 1,000 15-17 year old females 18 % of Population who smoke (16+ years) 19 % of adults spending 3+ days a week doing at least 30 mins exercise 20 % of adults with a BMI > 30 21 % of adults eating 5+ portions of fruit and veg per day 22 % of adults drinking above recommended daily units 23 Age-standardised alcohol-related hospital admission rates per 100,000

This profile is under development by NHS Leicester City and Leicester City Council