

14th December 2011

Economic Statistics

1. Following on from the previous Economic Development, Culture and Tourism Scrutiny Commission discussion, members requested further details about the Leicester Economy. This information is produced below.
2. Towards the end of the report an example is given of information that has been produced for each ward. That information will be made accessible for all wards on the LCC website.
3. We have also provided information which compares Leicester with a number of comparator cities.
4. The data covers in detail
 - a. High Growth Firms
 - b. Extent of public sector dependency
 - c. Unemployment
 - d. Employment rate
 - e. Job Seekers Allowance claimants
 - f. JSA claimants – age and duration and comparison data
 - g. NEET – Not in Education Employment and Training – by ward
 - h. Vacancy information
 - i. Skills and Qualifications data
 - j. Public Sector job losses
 - k. Earnings growth
 - l. Population Growth
 - m. Ward Profile
 - i. Population
 - ii. Economic Activity
 - iii. Full and Part time breakdown
 - iv. Employment by Occupation
 - v. Qualifications
 - vi. Out of Work benefits

ECONOMIC STATISTICS

HIGH GROWTH BUSINESSES

Distribution of high growth firms across England's cities (2005-08)¹

Rank	City	% of firms that are high growth	Rank	City	% of firms that are high growth
1	Aldershot	8.5	47	Stoke	4.7
2	Wigan	7.8	48	Huddersfield	4.6
3	Telford	7.6	49	Sheffield	4.6
4	Reading	7.1	50	Leicester	4.5
5	Cambridge	7.1	51	Rochdale	4.5
6	Swindon	7.0	52	Chatham	4.4
7	London	6.9	53	Birmingham	4.3
8	Crawley	6.8	54	Bolton	4.1
9	Warrington	6.5	55	Burnley	3.9
10	Newcastle	6.5	56	Worthing	2.8

PUBLIC SECTOR DEPENDENCIES

Further cities/towns in respect of Public sector dependencies

Rank	City	Rank	City
66	Nottingham	209	Coventry
86	Birmingham	246	Peterborough
115	Leicester	261	Northampton
140	Derby		

UNEMPLOYMENT

Leicester's total working age population is 207,700² of which 34,190 are currently on out-of-work benefits³

	Leicester City (numbers)	Leicester City (%)	East Midlands (%)	Great Britain (%)
Total claimants	40,370	19.4	13.9	14.5
By statistical group				
Job seekers	12,120	5.8	3.4	3.6
ESA and incapacity benefits	16,190	7.8	6.1	6.5

¹ Centre for Cities Report – Firms Intentions: Cities, Private Sector Jobs & the Coalition, Sept 2010

² ONS Mid-year population estimates of 2010, NOMIS

³ NOMIS – May 2011

Lone parents	4,600	2.2	1.4	1.5
Carers	3,350	1.6	1.2	1.2
Others on income related benefits	1,400	0.7	0.4	0.5
Disabled	2,290	1.1	1.1	1
Bereaved	420	0.2	0.2	0.2
Key out-of-work benefits†	34,310	16.5	11.4	12.1

Employment Rate

On average Great Britain has an average of 70.4% employment rate percentage whereas Leicester shows only 65.7%.⁴ This is particularly due to a lower employment rate of females in the city.

Rank	City	Employment Rate July 2009-June 2010 (%)	Rank	City	Employment Rate July 2009-June 2010 (%)
62	Birmingham	62.3	51	Leicester	65.7
55	Coventry	65.1	28	Peterborough	69.9
53	Nottingham	65.3		Great Britain	70.4
21	Derby	71.2	10	Northampton	74.5

Job Seekers Allowance

This table provides a comparison with other cities in the east midlands and surrounding areas. It shows unemployment hasn't increased as much in Leicester over as in other cities.

	City	% point change in claimant rate Feb '08 - Oct '11 ⁵	Claimant count rate % - Oct 11 ⁶		City	% point change in claimant rate Feb '08 - Oct '11	Claimant count rate % - Oct 11
	Birmingham	2.7	6.8		Leicester	2.0	4.8
	Coventry	1.8	5.0		Peterborough	2.1	4.7
	Nottingham	2.3	4.9		Great Britain	1.7	3.8
	Derby	2.4	4.9		Northampton	1.7	3.8

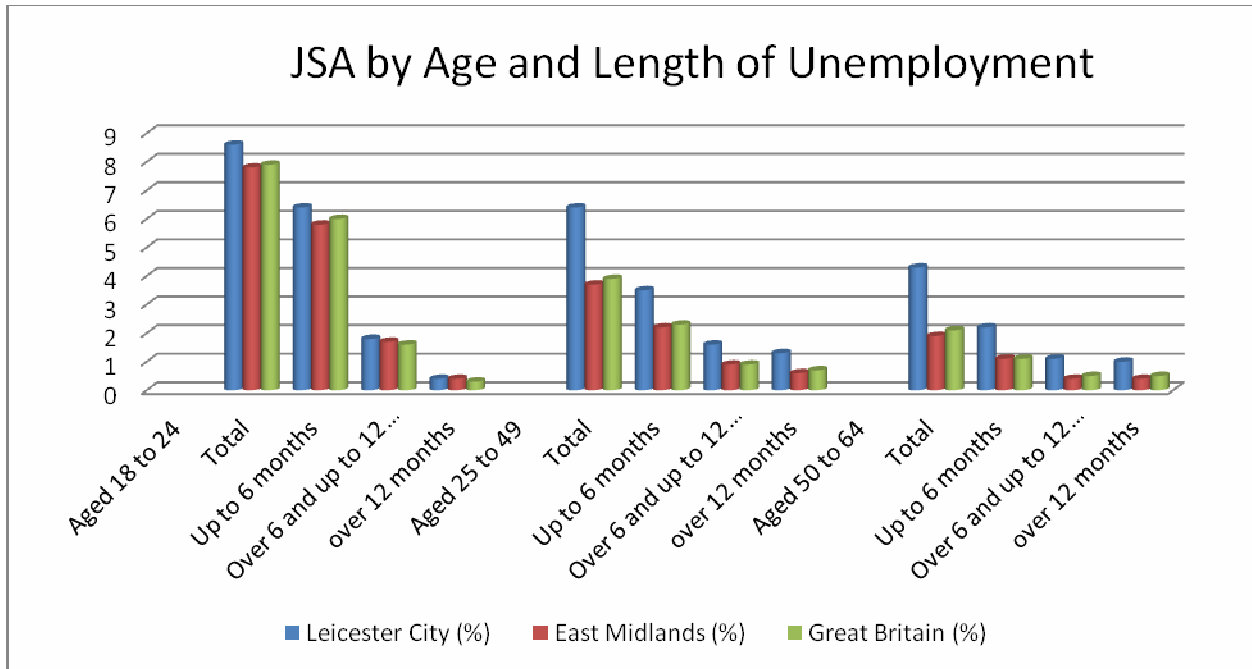
⁴ Centreforcities outlook 2011, NOMIS 2010, Annual Population Survey, residents analysis, July 2009-June 2009 and July 2009-June 2010 data

⁵ February 2008 – the lowest point on the UK claimant count series – is used here as the initial measurement point to take into account the extended duration of the recession

⁶ Centre for cities used data fro Primary Urban Areas (PUA) – a measurement of the built-up area of a city, rather than individual local authority districts – source ONS Crown Copyright reserved (from nomis 16.11.11)

Age and Length of Unemployment

The following table show comparison of length of unemployment by Age for Leicester in comparison with the East Midlands and Great Britain.⁷ It shows we are about average when it comes to the position of 18-24 yrs old but worse than average for the older age groups.



18 – 24yrs JSA Claimants

The national average for Youth JSA claimants is 5.8%, Leicester currently stands at 5.7% so our position is better than average and better than many city comparators.

City	% point change in youth claimant count rate Feb 08-Oct 11 ⁸	Youth claimant count rate % ⁹ Oct 11	City	% point change in youth claimant count rate Feb 08-Oct 11	Youth claimant count rate % Oct 11
Birmingham	3.8	9.6	Leicester	2.5	5.7
Coventry	1.9	5.7	Peterborough	2.5	7.1
Nottingham	2.7	6.2	Great Britain	2.5	5.8
Derby	3.6	7.2	Northampton	2.2	5.2

⁷ Nomis data – August 2011

⁸ February 2008 – the lowest point on the UK claimant count series – is used here as the initial measurement point to take into account the extended duration of the recession

⁹ The youth claimant count rate is calculated as a percentage of all young people (Aged 16-24). Source ONS crown copyright reserved (from NOMIS on 16.11.11)

NEET

The following table provides a breakdown by ward in relation to young people Not in Employment, Education or Training (NEET)¹⁰. As you will note, the highest number of are in Freemans, Castle, New Parks and Westcotes.

Ward	Cohort	NEETs	Oct-11	Ward	Cohort	NEETs	Oct-11
Freemans	454	70	15.4	Fosse	367	35	9.5
Westcotes	155	19	12.3	Humberstone & Hamilton	680	38	5.6
Castle	243	37	15.2	Belgrave	493	26	5.3
New Parks	737	97	13.2	Spinney Hills	1161	37	3.2
Abbey	614	62	10.1	Colman	572	24	4.2
Eyres Monsell	542	59	10.9	Stoneygate	837	30	3.6
Beaumont Leys	680	55	8.1	Western Park	298	18	6.0
Braunstone	804	86	10.7	Rushey Mead	613	18	2.9
Aylestone	350	26	7.4	Evington	443	15	3.4
Thurncourt	394	26	6.6	Knighton	522	8	2
Charnwood	574	35	6.1	Latimer	526	12	1.6
Total	12059	833					

¹⁰ Connexions newsletter, October 2011

Leicester City: Years 12-14 Residency NEET

Data: Connexions Leicester Shire & DfE



From the data collected (*Connexions Leicester Shire Monthly Performance Information Report October 2011*) the trend towards reducing numbers of young people becoming NEET appears to be continuing. However analysis at a ward level demonstrates significant differences in percentages and numbers of young people becoming NEET. The tables below shows NEET data across the City wards, the percentage figure represents the number of individuals who are NEET out of the total number of young people in that Ward. The City Average has been included as a way of comparison.

This shows a significantly higher than average proportion of young people in the most deprived wards are NEET. The disproportionate balance also follows the yearly cycle with greater disparity between months in those wards with the highest levels of deprivation. The yearly cycles of young people moving in and out of ETE follows periods of transition within the academic year where there are peaks during the late summer months, a fall during autumn, and a gradual increase again towards April/May.

Ward Rank		October 2010 - October 2011												
		Oct	Nov	Dec	Jan	Feb	Mar	Apr	May	Jun	Jul	Aug	Sept	Oct
1	Freemen Oct 2010-Oct 2011	14.8%	13.5%	14.1%	13.6%	15.4%	18.1%	18.8%	20.1%	21.2%	22.5%	24.3%	16.5%	15.5%
2	Westcotes Oct 2010-Oct 2011	16.5%	17.8%	16.9%	15.4%	17.4%	12.3%	13.3%	14.9%	14.4%	17.3%	14.5%	12.7%	12.0%
3	Castle Oct 2010-Oct 2011	8.8%	9.0%	10.1%	7.7%	10.3%	14.3%	13.7%	14.5%	15.1%	16.4%	19.4%	16.0%	15.0%
4	New Parks Oct 2010-Oct 2011	11.8%	10.1%	10.3%	10.5%	12.0%	12.0%	13.0%	14.3%	15.1%	16.2%	18.2%	12.7%	13.3%
5	Abbey Oct 2010-Oct 2011	10.6%	12.2%	11.0%	10.8%	13.2%	13.3%	14.0%	15.2%	15.3%	16.1%	14.7%	10.2%	9.6%
5	Eyres Monsell Oct 2010-Oct 2011	14.2%	11.4%	11.0%	11.9%	13.2%	13.7%	13.3%	12.7%	14.8%	15.4%	14.0%	10.6%	10.8%
7	Braunstone Park and Rowley Fields Oct 2010-Oct 2011	10.0%	10.0%	9.8%	10.4%	11.0%	10.3%	10.9%	12.9%	13.0%	11.5%	11.6%	11.5%	10.5%
8	Beaumont Leys Oct 2010-Oct 2011	9.0%	9.7%	10.1%	9.2%	10.0%	9.6%	11.0%	10.5%	10.4%	11.6%	12.3%	9.5%	7.9%
9	Thurncourt Oct 2010-Oct 2011	8.5%	8.5%	7.9%	7.5%	9.2%	9.3%	9.2%	9.7%	9.7%	8.9%	9.1%	8.2%	6.2%
10	Charmwood Oct 2010-Oct 2011	8.9%	9.7%	8.9%	8.4%	9.2%	9.8%	9.8%	8.1%	8.1%	8.9%	8.2%	6.8%	5.9%
11	Aylestone Oct 2010-Oct 2011	8.9%	7.6%	7.1%	7.8%	7.8%	6.8%	8.6%	10.0%	9.5%	9.8%	11.2%	7.2%	7.5%
12	Fosse Oct 2010-Oct 2011	8.7%	8.5%	7.5%	6.6%	6.7%	7.0%	5.7%	7.2%	7.7%	8.1%	10.1%	10.1%	9.6%
13	City Average Oct 2010-Oct 2011	7.1%	7.1%	6.8%	6.9%	7.3%	7.4%	7.5%	7.9%	8.3%	8.6%	9.0%	7.3%	5.7%
14	Humberstone and Hamilton Oct 2010-Oct 2011	6.9%	7.6%	7.4%	7.0%	6.4%	6.1%	6.9%	7.5%	7.7%	8.1%	8.9%	6.6%	5.3%
15	Belgrave Oct 2010-Oct 2011	7.4%	6.4%	5.9%	6.5%	6.7%	7.2%	8.3%	8.3%	8.7%	7.5%	8.2%	6.0%	4.8%
16	Western Park Oct 2010-Oct 2011	3.9%	4.2%	4.5%	4.3%	4.4%	4.8%	5.5%	4.4%	5.0%	5.3%	7.7%	6.3%	5.8%
17	Spinney Hills Oct 2010-Oct 2011	4.5%	5.1%	5.2%	4.7%	4.8%	5.1%	5.2%	5.4%	5.5%	6.0%	6.2%	4.7%	3.1%
18	Coleman Oct 2010-Oct 2011	6.0%	5.9%	4.8%	4.7%	4.1%	4.2%	4.6%	4.6%	5.4%	5.6%	4.9%	4.4%	4.3%
19	Stoneygate Oct 2010-Oct 2011	4.1%	4.3%	4.1%	3.9%	4.4%	4.7%	5.3%	5.2%	5.3%	5.3%	5.2%	5.2%	3.5%
20	Rushey Mead Oct 2010-Oct 2011	3.4%	4.6%	5.0%	4.4%	4.6%	5.2%	5.4%	5.1%	5.4%	5.1%	4.6%	4.3%	3.0%
21	Evington Oct 2010-Oct 2011	2.6%	2.2%	2.2%	2.3%	3.2%	3.6%	4.4%	4.8%	4.3%	3.8%	3.8%	5.4%	3.0%
22	Latimer Oct 2010-Oct 2011	3.7%	3.6%	3.2%	3.3%	2.8%	2.6%	2.3%	1.8%	1.8%	1.6%	1.5%	2.7%	2.3%
23	Knighton Oct 2010-Oct 2011	3.4%	3.3%	2.3%	1.9%	2.7%	3.0%	2.6%	1.6%	1.7%	2.0%	2.0%	3.6%	1.1%

Analysis of the data by Connexions shows that the higher concentrations of NEET young people are in the South West and West of the City, as shown above. The recent headline figures of October 2011 suggest that approximately between 88-90% of young people in Leicester City were in education, 5-7% in employment, and 4-5% in training. On the basis of these figures compared to October 2010 there has been an apparent increase in the numbers going into education, employment has remained the same, and a slight drop in training. These figures represent a snapshot of the data held and are used to demonstrate some indicative trends, any further conclusions would require a fuller analysis of the data available.

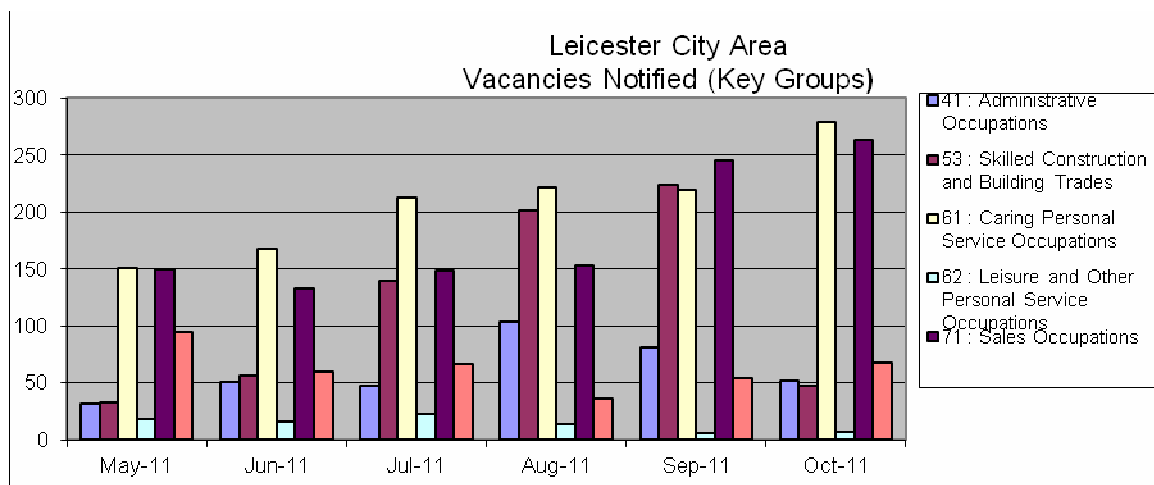
Vacancy Data

The following table provides data in relation to the number of JSA claimants against the job vacancies recorded at Job Centre Plus.

Area	JSA Claimants	Claimants per live unfilled JCP vacancy	Ranking
Leicester	14,556	5.4	25
Nottingham	21,429	4.9	31
Derby	7,816	4.7	33
Coventry	10,445	4.1	36
Great Britain		4.6 (average)	

Breaking this down further, the first table provides details of the top 10 vacancies recorded by Job Centre Plus in October 2011¹¹ and the 2nd table shows an average of 6 months activity across the vacancies.

Leicester		Oct-11
Occupation		Leicester
3542 : Sales representatives		268
6115 : Care assistants and home carers		191
8211 : Heavy goods vehicle drivers		129
9241 : Security guards and related occupations		103
7113 : Telephone salespersons		80
7111 : Sales and retail assistants		74
8111 : Food, drink and tobacco process operatives		72
7129 : Sales related occupations n.e.c.		66
8222 : Fork-lift truck drivers		53
6111 : Nursing auxiliaries and assistants		50



¹¹ ONS Crown Copyright Reserved [from Nomis on 16 November 2011]

Skills Qualifications

The table below provides an overview of qualifications skills in comparison with the East Midlands and Great Britain. We are worse than average in all areas¹².

	Leicester City	Leicester City	East Midlands	Great Britain
	(numbers)	(%)	(%)	(%)
NVQ4 and above	51200.00	24.80	27.20	31.30
NVQ3 and above	83800.00	40.60	48.90	51.00
NVQ2 and above	112800.00	54.60	65.90	67.30
NVQ1 and above	140400.00	68.00	79.10	80.20
Other qualifications	29000.00	14.00	8.00	8.50
No qualifications	37200.00	18.00	12.90	11.30

The following tables provide comparisons with other cities. This shows Leicester 63rd out of 63 in relation to those with no qualifications.

No Qualifications: ¹³

Rank	City	% working age population with no qualification 2009	Rank	City	% working age population with no qualification 2009
61	Birmingham	19.4	63	Leicester	19.9
41	Coventry	14.6	40	Peterborough	14.2
30	Nottingham	12.8		Great Britain	7.8
60	Derby	18.3	47	Northampton	15.5

High Level Qualifications:¹⁴

Rank	City	% working age population with NVQ4+ 2009	Rank	City	% working age population with NVQ4+ 2009
46	Birmingham	22.4	41	Leicester	23.3
34	Coventry	25.3	51	Peterborough	20.7
32	Nottingham	25.6		Great Britain	29.9
28	Derby	26.3	53	Northampton	20.5

Predicted Public Sector Job Losses (by 2014/15)

The following table predicts public sector job losses¹⁵

Rank	City	Number of Jobs	% of all jobs	Rank	City	Number of Jobs	% of all jobs
28	Birmingham	-23800	-2.3	12	Leicester	-6000	-2.7
17	Coventry	-3600	-2.6	55	Peterborough	-1600	-1.6

¹² Baseline Information from Nomis January 2010 - Dec 2010, Annual Population Survey (2009 data)

¹³ CentreforCities Report , Outlook 2011: source NOMIS 2010, Annual population Survey (2009 data)

¹⁴ Centreforcities report, outlook 2011,source NOMIS 2010, Annual population survey (2009 data)

¹⁵ Centreforcities Outlook 2011, ONS 2010, Civil service Employment, NOMIS 2010, Annual Business Inquiry, LGA 2010, Quarterly Public Sector Employment Survey

13	Nottingham	-7800	-2.7		Great Britain		
26	Derby	-2800	-2.4	46	Northampton	-2600	-2.0

Earnings Growth (average weekly earnings)

This table shows that Great Britain had an average of -0.2%, whereas Leicester's current growth is estimated at -0.5%, below the national average.

Rank	City	Earnings 2006 (£)	Earnings 2010 (£)	Real Growth rate (%)
31	Birmingham	389	389	-0.2
37	Coventry	380	386	-0.3
54	Nottingham	403	390	-0.7
9	Derby	376	408	0.4
45	Leicester	382	371	-0.5
53	Peterborough	413	389	-0.7
	Great Britain	451	444	-0.2
63	Northampton	412	390	-1.8

Population Growth

In relation to population growth, Peterborough has grown most from 1999-2009.¹⁶

Rank	City	Population 2009	Annual Growth Rate (%)	Change 1999-2009
46	Birmingham	2,325,900	0.21	48,500
42	Coventry	312,800	0.26	8,000
22	Nottingham	635,900	0.55	33,700
25	Derby	244,100	0.54	12,800
20	Leicester	456,900	0.62	27,400
8	Peterborough	171,200	0.90	14,700
	Great Britain	60,003,100	0.51	2,997,700
16	Northampton	210,500	0.73	14,800

Ward Profiles

A ward profile has been prepared for each ward providing summary economic data, including unemployment, labour supply, population, skills etc.

This data will be uploaded Leicester City Council's website for each ward. It should be noted this data is updated monthly on the NOMIS website with JSA information and therefore a link to it will be incorporated as part of the website.

¹⁶ Centrefor cities outlook 2011, NOMIS 2010, Mid-year estimates, 1999 and 2009 data

ABBHEY WARD

Resident population

Population aged 16-64 (2009)

	00FNNF : Abbey (numbers)	00FNNF : Abbey Leicester City (numbers)	00FNNF : Abbey Leicester City Great Britain (numbers)
All people - aged 16 to 64	9,000	207,700	39,192,600
Males - aged 16 to 64	4,400	103,100	19,591,400
Females - aged 16 to 64	4,600	104,600	19,601,100

Source: ONS mid-year population estimates

Percentages are based on total population.

Labour Supply

Employment and unemployment (2001)

[compare other areas](#) [download \(xls\)](#) [query dataset...](#)

	00FNNF : Abbey (numbers)	00FNNF : Abbey (%)	00FNNF : Abbey Leicester City (%)	00FNNF : Abbey Leicester City Great Britain (%)
All people				
Economically active	5,406	71.0	67.7	74.0
In employment	4,830	63.4	61.4	69.8
Employees	4,431	58.2	55.9	61.0
Self employed	399	5.2	5.5	8.8
Unemployed	576	10.7	9.2	5.7
Males				
Economically active	2,965	79.4	75.8	81.4
In employment	2,627	70.4	68.0	76.0
Employees	2,301	61.7	59.2	63.1
Self employed	326	8.7	8.8	12.9
Unemployed	338	11.4	10.2	6.5
Females				
Economically active	2,441	62.8	60.0	66.8
Employment	2,203	56.7	55.1	63.7
Employees	2,130	54.8	52.7	59.0
Self employed	73	1.9	2.4	4.7
Unemployed	238	9.8	8.1	4.7

Source: Census of Population (Table CAS028 - Sex and Age by Economic Activity)

Note: Percentages are based on population aged 16-64, except unemployed which is based on economically active.

Economic inactivity (2001)

[compare other areas](#) [query dataset...](#)

	00FNNF : Abbey (numbers)	00FNNF : Abbey (%)	00FNNF : Abbey Leicester City (%)	00FNNF : Abbey Leicester City Great Britain (%)
All people				
Economically inactive	2,212	29.0	32.3	26.0
Retired	260	3.4	3.2	4.5
Student	376	4.9	9.7	5.3
Other	1,576	20.7	19.5	16.2
Males				

Economically inactive	767	20.6	24.2	18.6
Retired	59	1.6	1.7	3.0
Student	179	4.8	9.7	5.3
Other	529	14.2	12.8	10.4

Females

Economically inactive	1,445	37.2	40.0	33.2
Retired	201	5.2	4.6	6.1
Student	197	5.1	9.6	5.2
Other	1,047	26.9	25.8	21.9

Source: Census of Population (Table CAS028 - Sex and Age by Economic Activity)

Note: Percentages are based on population aged 16-64.

Hours worked (2001)

[compare other areas](#) [query dataset...](#)

00FNNF : Abbey 00FNNF : Abbey Leicester City Great Britain (numbers) (%) (%) (%)

All people

Full time in employment	3,702	76.5	75.5	75.9
Part time in employment	1,136	23.5	24.5	24.1

Males

Full time in employment	2,398	91.1	88.2	91.1
Part time in employment	233	8.9	11.8	8.9

Females

Full time in employment	1,304	59.1	60.7	58.0
Part time in employment	903	40.9	39.3	42.0

Source: Census of Population (Table CAS029 - Sex and Age by Hours Worked)

Note:

Figures are for persons aged 16-64 and percentages are based on all persons in employment.

Employment by occupation (2001)

[compare other areas](#) [query dataset...](#)

	00FNNF : Abbey (numbers)	00FNNF : Abbey (%)	Leicester City (%)	Great Britain (%)
1 Managers and senior officials	359	7.4	9.7	14.8
2 Professional	209	4.3	9.9	11.1
3 Associate professional & technical	397	8.2	10.8	13.9
4 Administrative & secretarial	547	11.3	11.7	13.3
5 Skilled trades	696	14.4	10.6	11.6
6 Personal services	377	7.8	6.8	7.0
7 Sales and customer services	395	8.2	8.8	7.8
8 Process plant and machine operatives	890	18.4	15.6	8.6
9 Elementary occupations	960	19.9	16.1	11.9

Source: Census of Population (Table CAS033 - Sex and Occupation by Age)

Figures are for persons aged 16-64 by Soc 2000 major groups. Percentages are based on all persons in employment

Note:

Qualifications (2001)[compare other areas](#) [query dataset...](#)

	00FNNF : Abbey	00FNNF : Abbey	Leicester City	Great Britain
	(numbers)	(%)	(%)	(%)
All people				
No qualifications or level unknown	4,781	54.5	44.2	35.8
Lower level qualifications	3,265	37.2	39.1	43.9
Higher level qualifications	723	8.2	16.8	20.4
In employment				
No qualifications or level unknown	2,118	45.0	35.7	25.6
Lower level qualifications	2,086	44.3	41.3	48.9
Higher level qualifications	504	10.7	23.0	25.5
Unemployed				
No qualifications or level unknown	267	49.7	48.8	38.4
Lower level qualifications	224	41.7	39.5	47.2
Higher level qualifications	46	8.6	11.7	14.5

Source: Census of Population (Table CAS032 - Sex and Age and Level of Qualifications by EA)

Note: All figures are for persons aged 16 to 74.

OUT-OF-WORK BENEFITS

The Jobseeker's Allowance (JSA) is payable to people under pensionable age who are available for, and actively seeking, work.

Total JSA claimants (October 2011)[view time-series](#) [compare other areas](#) [query dataset...](#)

	00FNNF : Abbey	00FNNF : Abbey	Leicester City	Great Britain
	(numbers)	(%)	(%)	(%)
All people	690	7.7	6.0	3.8
Males	448	10.1	8.0	5.1
Females	242	5.3	4.0	2.6

Source: claimant count with rates and proportions

Note: The percentage figures show the number of JSA claimants as a proportion of resident population aged 16-64.

JSA claimants by age and duration (October 2011)[view time-series](#) [compare other areas](#) [query dataset...](#)

	00FNNF : Abbey	00FNNF : Abbey	Leicester City	Great Britain
	(numbers)	(%)	(%)	(%)
by age of claimant				
Aged 18-24	215	31.2	29.2	30.7
Aged 25-49	360	52.1	55.2	54.1
Aged 50 and over	115	16.4	15.4	15.0
by duration of claim				
Up to 6 months	390	56.5	56.1	60.2
Over 6 up to 12 months	170	24.8	25.2	23.1
Over 12 months	130	18.7	18.7	16.7

Source: claimant count - age and duration

Note: The percentage figures represent the number of JSA claimants in a particular category as a percentage of all JSA claimants.

DWP benefit claimants (May 2011)[view time-series](#) [compare other areas](#) [query dataset...](#)

	00FNNF : Abbey	00FNNF : Abbey	Leicester City	Great Britain
	(numbers)	(%)	(%)	(%)
Total claimants	2,365	26.3	19.4	14.5
Job seekers	665	7.4	5.8	3.6

ESA and incapacity benefits	940	10.4	7.8	6.5
Lone parents	345	3.8	2.2	1.5
Carers	175	1.9	1.6	1.2
Others on income related benefits	80	0.9	0.7	0.5
Disabled	135	1.5	1.1	1.0
Bereaved	25	0.3	0.2	0.2
Key out-of-work benefits [†]	2,030	22.6	16.5	12.1

Source: benefit claimants - working age clients for small areas

[†] Key out-of-work benefits includes the groups: job seekers, ESA and incapacity benefits, lone parents and others on income related benefits. See the **Definitions and Explanations** below for details

Note: The percentage figures show the number of benefit claimants as a proportion of resident population aged 16-64.