



**Leicester, Leicestershire  
and Rutland**  
Integrated Care Board

Working in partnership with  
Northamptonshire Integrated Care Board

# Health & Wellbeing Board: Vaccination & Immunisation Update

**Annie Traynor**  
Head of Immunisations & Screening

**4<sup>th</sup> December 2025**

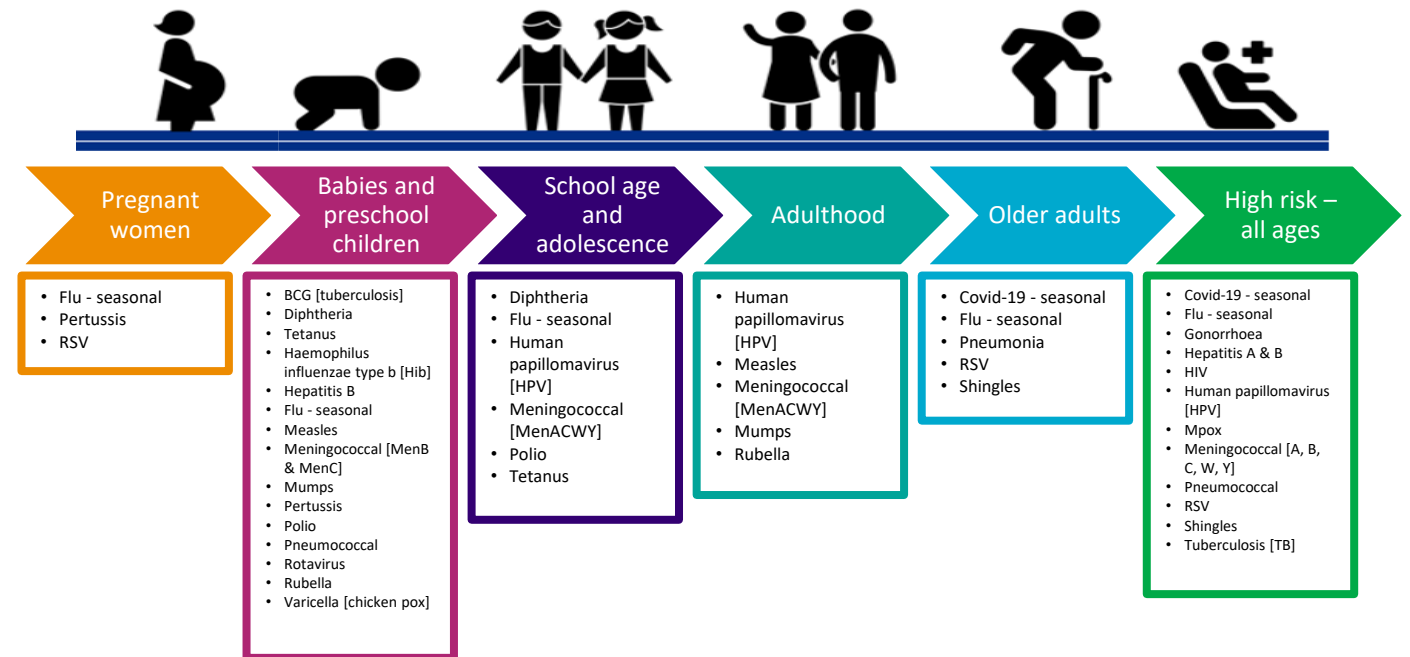
A proud partner in the:



**Leicester, Leicestershire  
and Rutland**  
Health and Wellbeing Partnership

# Setting the Context

- Commissioning responsibility – NHS England currently
- National Vaccination Strategy – timeline slipped to April 2027
- ICB role - prepare for transfer, support improved uptake, lead local arrangements for COVID-19 vaccine, winter vaccination plan
- LLR Immunisation Board & strategy established
- Challenges - complexity in accountability and planning, fragmentation, uncertainty
- Opportunities - population based commissioning, provider performance, integration with wider prevention agenda



# Key Challenges



**Socioeconomic and Demographics:** uptake is lowest in deprived neighbourhoods and among some ethnic minority groups



**Vaccine Hesitancy and Misinformation:** cultural concerns have contributed to hesitancy; social media amplifies misinformation



**Access and System Barriers:** Appointment booking difficulties; inflexible NHS systems; limited availability of convenient clinics; language and literacy barriers make communication less effective.



**Operational Challenges:** Workforce shortages and fragmented delivery models disrupt pathways and continuity of care



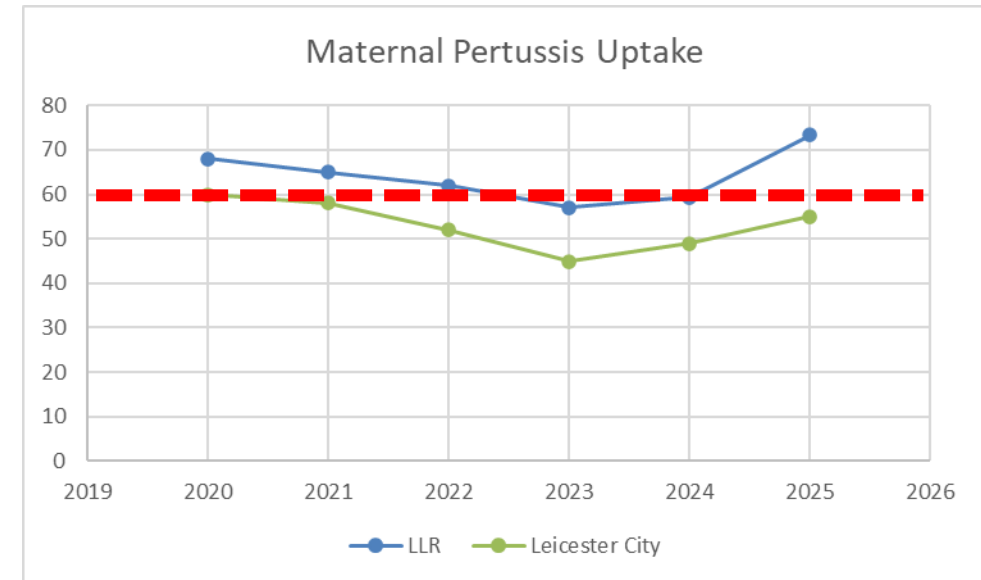
**Behaviour and psychological:** Vaccine fatigue; CYP influenced by older and family / household influencers.



**Funding:** There is a need for sustainable investment to support year-round prevention funding, community-based delivery models e.g. roving services, and investment in supporting workforce capacity

# Maternal Vaccinations

- Maternal Pertussis uptake is improving.
- RSV and flu are below target, driven by access barriers and awareness gaps.



## Actions underway:

(Sources: UKHSA/PHE maternal vaccination reports (Flu & Pertussis, 2015–2023); UKHSA RSV uptake report (2024–25))

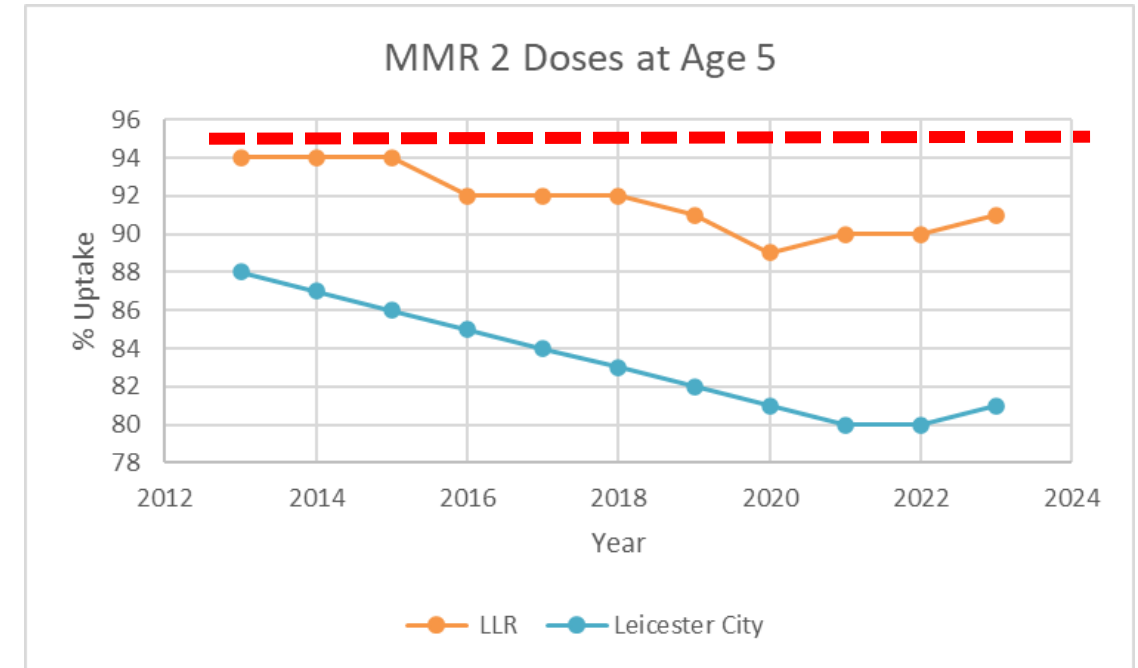
- Text messages and follow-up clinical phone calls to unvaccinated women this winter, led by supervaccinators
- Community pharmacy pilot offer for pregnant women
- Expansion of vaccines on the roving healthcare unit (RHU) to improve access and convenience
- Bookable appointments to be established at hospital sites, and follow-up on women who DNA
- Staffing levels stabilised in antenatal vaccination service, backed-up by supervaccinators when there are gaps

# Routine Childhood Vaccinations

- Childhood immunisation rates are stronger for early doses but fall for pre-school boosters and MMR2, mirroring national declines.
- Consistently below the WHO target of 95% coverage for most vaccines.
- Uptake is lowest in deprived neighbourhoods and among some ethnic minority groups, requiring targeted interventions.

## Actions underway:

- Intensive Support Team working with low uptake practices
- Uptake data shared with Leicester City PCNs quarterly
- Supervaccinator team provide additional capacity to GP practices with high waiting lists / high numbers of unvaccinated children / areas of deprivation
- RHUs delivering vaccinations and supporting practices to deliver health checks and MECC in community settings
- Clinical leads webinars share best practice and support GP engagement.



(Sources: UKHSA COVER Reports & NHS Digital immunisation statistics (2013-2023))



# Current Initiatives

- New e-consent process in schools
- New streamlined call and recall process for pre-school children
- Roving Healthcare Unit – 140 clinics a year
- Supervaccinators – 4,800 vaccines in 12 months
- Integrated communications strategy
- LLR Vaccine Hub website - 22k views in 12 months
  - ‘Walk-in Immunisation Finder’ detailing local walk-in clinics – 9,700 hits since Oct 2025
- Funding secured from NHS England’s Public Health Investment Fund: Co-design work with VCSEs



South Asian Health Action participating in the LIST project in Westcotes in early 2025, utilising the RHU & supervaccinators at community events to engage local people in vaccination conversations.

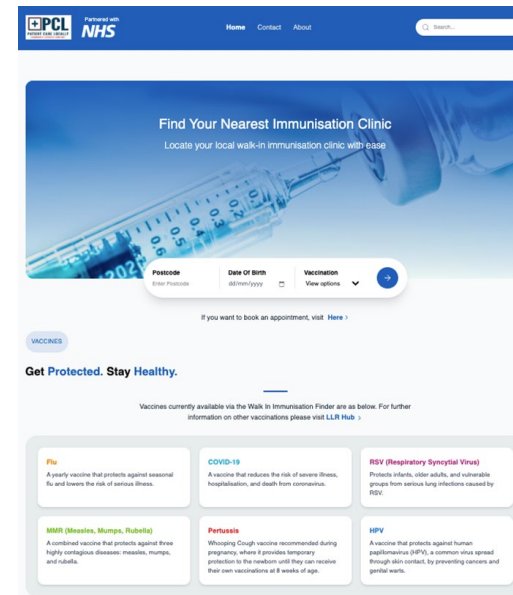
# Strategic Priorities

- **Securing ring-fenced funding for addressing health inequalities** during and after commissioning transfer. Advocate for multi-year budgets to support outreach and innovation.
- **Embed vaccination in prevention plans**, ensuring alignment with Public Health health inequalities strategies and urgent care pathways.
- **Expand community outreach**, in conjunction with neighbourhoods, via collaboration between providers, to improve convenience and trust and expand access to vaccines and other prevention services.
- **Strengthen public engagement** by codesigning campaigns with local communities to address vaccine hesitancy and improve confidence.
- **Continue collaboration** across local partners and VCSE organisations.
- **Prepare for transfer of commissioning responsibilities** in April 2027. Increased emphasis on data-driven approaches and potential for more locally designed models that better reflect community needs.
- **Optimise opportunities from NHS reorganisation** - economies of scale, learning from other systems' successes

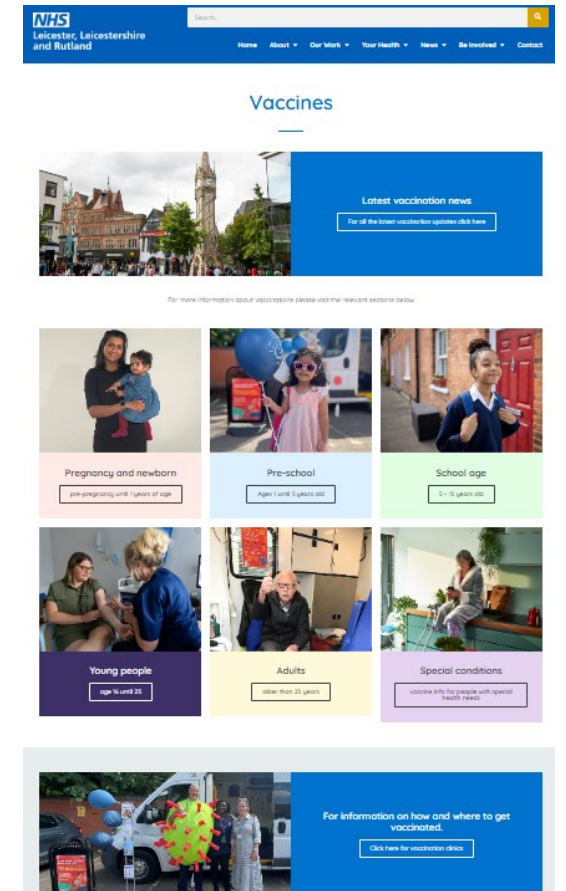


# Winter Vaccination Campaign

- Strong performance in older adults and care home residents, but challenges remain in pregnant women and children.
- School vaccination continues to 12 Dec, with mop-ups to end Dec. Introduction of NHSE digital consent platform (MAVIS) is having a significant positive effect on vaccine uptake for in-school vaccination and making it easier for parents to respond.
- Innovative activities: therapy dogs attending community clinics, supervaccinators providing additional vaccination capacity, and pharmacy pilots are improving access and experience.
- Maternal RSV project is a key new initiative to protect newborn babies and infants (starting 17 Nov), delivered through integrated, equitable approaches.
- Ongoing challenges are being addressed through mobile healthcare units visiting low-up take areas, targeted messaging, and accessible online vaccine hub (*far right*) and walk-in vaccination finder service (*near right*).



[LLR Walk-In Immunisation Finder](#)



[LLR Vaccine Hub](#)





**Thank You**