

LLR SEND & Inclusion Alliance

formerly SEND & AP Change Programme Partnership (CPP)

Fay Bayliss – Co-Director
Mark Roberts Co-Director

Leicester, Leicestershire and Rutland Joint
Health Scrutiny
February 2026



Ambitions beyond the SEND & AP CPP



Change Programme Partnership workstreams across phases

Phase 1 testing	Phase 2	Phase 3
<ul style="list-style-type: none">• Developing Local Area Inclusion Partnerships• Standardised Digitised EHCP template• Tailored Advisory Lists• Local Area Inclusion Plan• Mediation at earlier stage• 3 tier Alternative Provision (AP)• Early Language Support for Every Child (ELSEC)• Alternative Provision Strategic Taskforce APST (City)	<ul style="list-style-type: none">• Advice & Information• Coproduction Charter• Alternative Provision (AP)• APST (City, County, Rutland)• ELSEC• Partnership for Neurodiversity in Schools (PINS)	<ul style="list-style-type: none">• Local Integrated Service Offer (LISO)• APST (County & Rutland)• Alternative Provision (AP)• ND Inclusion<ul style="list-style-type: none">• ELSEC• PINs• SEN Units/Resourced Provision• Assistive Technology lending libraries• Local Inclusion Plan, Maturity Assessment tool (feedback on templates/guidance)• SEND & Inclusion Alliance

Key Impacts:

- Advice & Information:** MDT approach to EHC Assessment – improved KPIs and backlog clearance
- ELSEC:** c.1000 children’s needs met with universal & targeted approaches – 100% parental satisfaction. Focus on reducing HI
- PINS:** Increased capacity to support need in mainstream education; improved relationships between LAs, Schools and PCFs
- ATLL:** System efficiencies for equipment costs (scoping scalability)
- LAIPS:** informing joint/aligned commissioning priorities and underpin LLR Community Inclusion Programme

Formation of the LLR SEND & Inclusion Alliance (endorsed by DfE)

LLR SEND & Inclusion Alliance: 5 Strategic aims



- Co-production is the golden thread that weaves through everything we do, and our work is underpinned by our locally developed Co-Production Charter. **We aim to co-produce our goals and delivery plans.**
- The Local Integrated Service Offer (LISO) is a multi-disciplinary approach to bridge the gap between specialist and mainstream provision. **We aim to ensure all children and young people with SEND, who don't need specialist provision, have their needs met in mainstream education.**
- Our community inclusion programme works with LLR communities to support local cyp with SEND to thrive. **We aim to ensure all children and young people with SEND feel that they belong in their local communities.**
- Our Joint Commissioning Strategy. **We aim to facilitate commissioning as a health, care and education system, to ensure that our children and young people with SEND, and their families, receive the support that they need when they need it.**

Having these building blocks in place will facilitate collective ownership and strengthen accountability. **We aim to collectively own the challenges and opportunities of our local SEND system to ensure we provide a high-quality standard of integrated support for children and young people with SEND, and their families.**

System commitment to these aims are formalised within the LLR SIA MOU

LLR Co-production Charter

Coproduction involves individual and community voices working together in respectful partnership to improve lives.



We respect and trust everyone in the process

We support and enable everyone to be heard

We are clear on the way forward and act on what has been agreed

We are honest, respect confidentiality and try to understand everyone's circumstances and point of view



We work in partnership

We welcome and value everyone's views

We seek honest and transparent feedback
We understand that our different roles, responsibilities and perspectives are the key to good coproduction



We communicate well

We listen to everyone's views

We feed back to everyone about what we have heard and what we have done

We make sure all communication is simple, accurate and easy to understand
We give everyone the information and support they need to participate



We are inclusive

We make everyone feel welcome, comfortable and that they belong

We give everyone the time and space to be heard

We make sure that everyone can participate – for example meeting venues are accessible, we meet at suitable times, we provide interpreters where we can

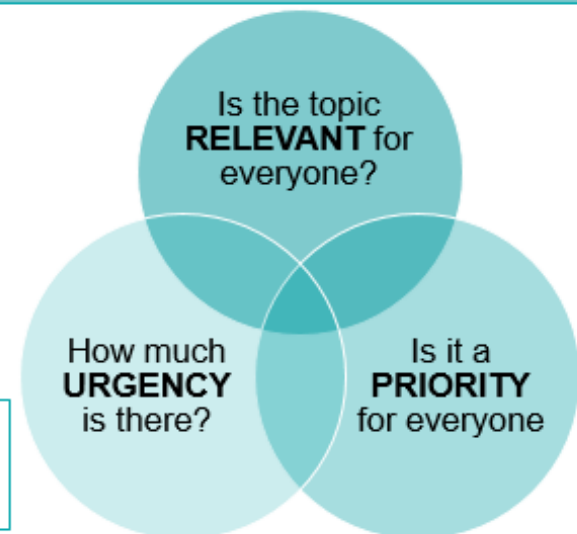
Coproduction should happen at all levels:

- Individual
- Operational
- Strategic

Coproduction should cover all relationships:

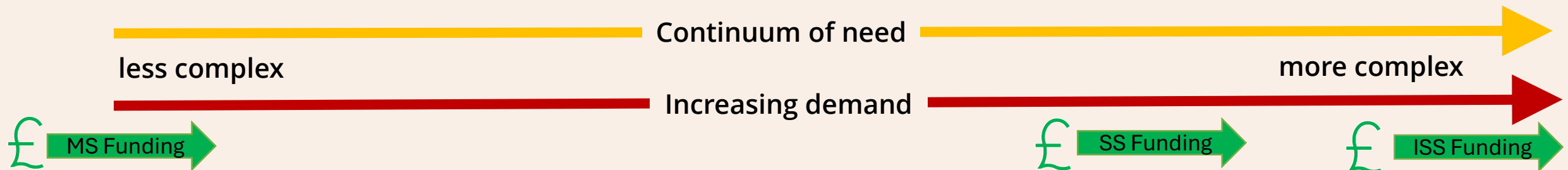
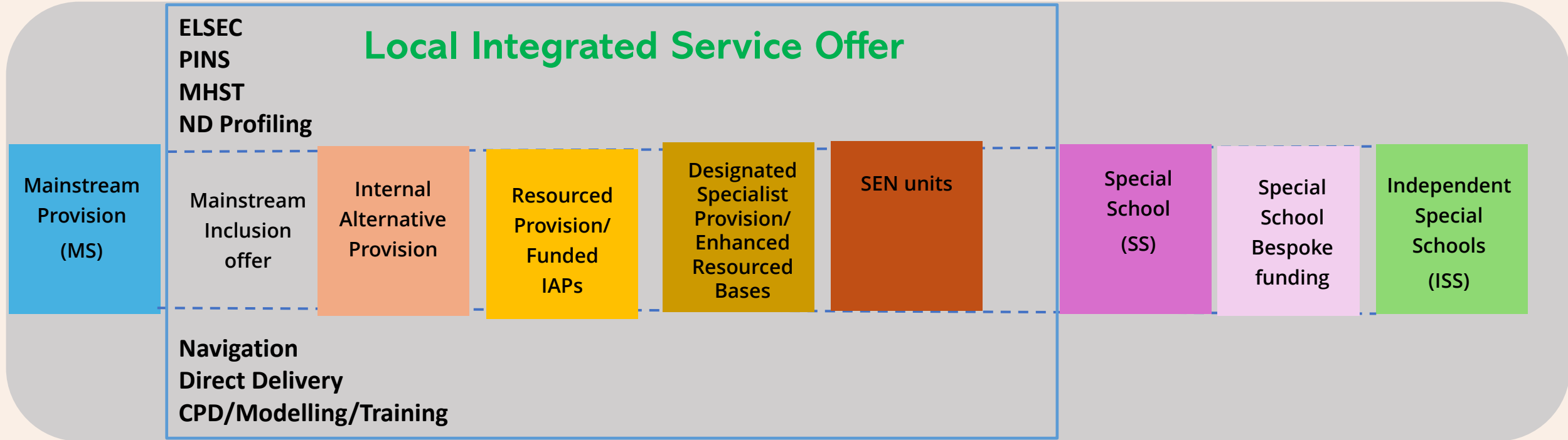
- Practitioners (inc schools) to parents and CYP
- Commissioners to parents and CYP
- Commissioners to practitioners
- Providers to other practitioners
- Parents and CYP with other parents and CYP

We seek to coproduce as much as possible but need to consider:



Bad planning is no excuse!

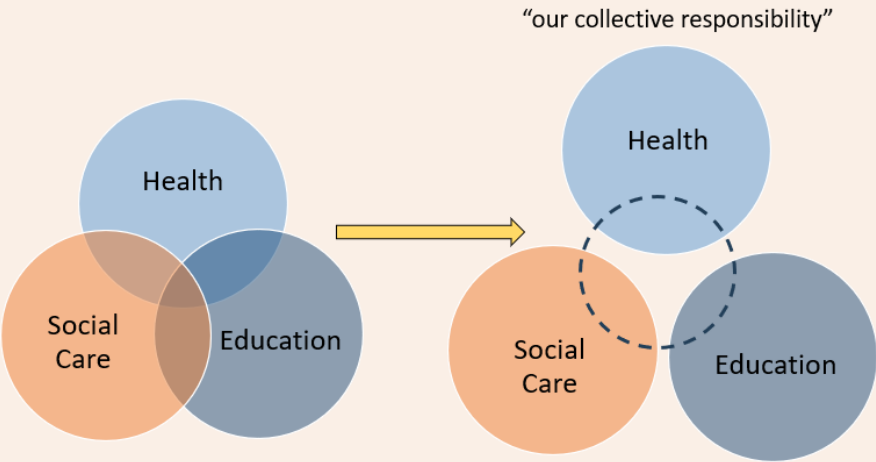
Continuum of SEND Provision



Aligned Commissioning Priorities:

Evidence base:

- Triangulation of the 3 LLR Local Area Inclusion Plans (LAIPS – CPP phase 1)
- Findings from local ‘Young researchers, Young Voices’ report
- Analysis of locally developed SEND data dashboard

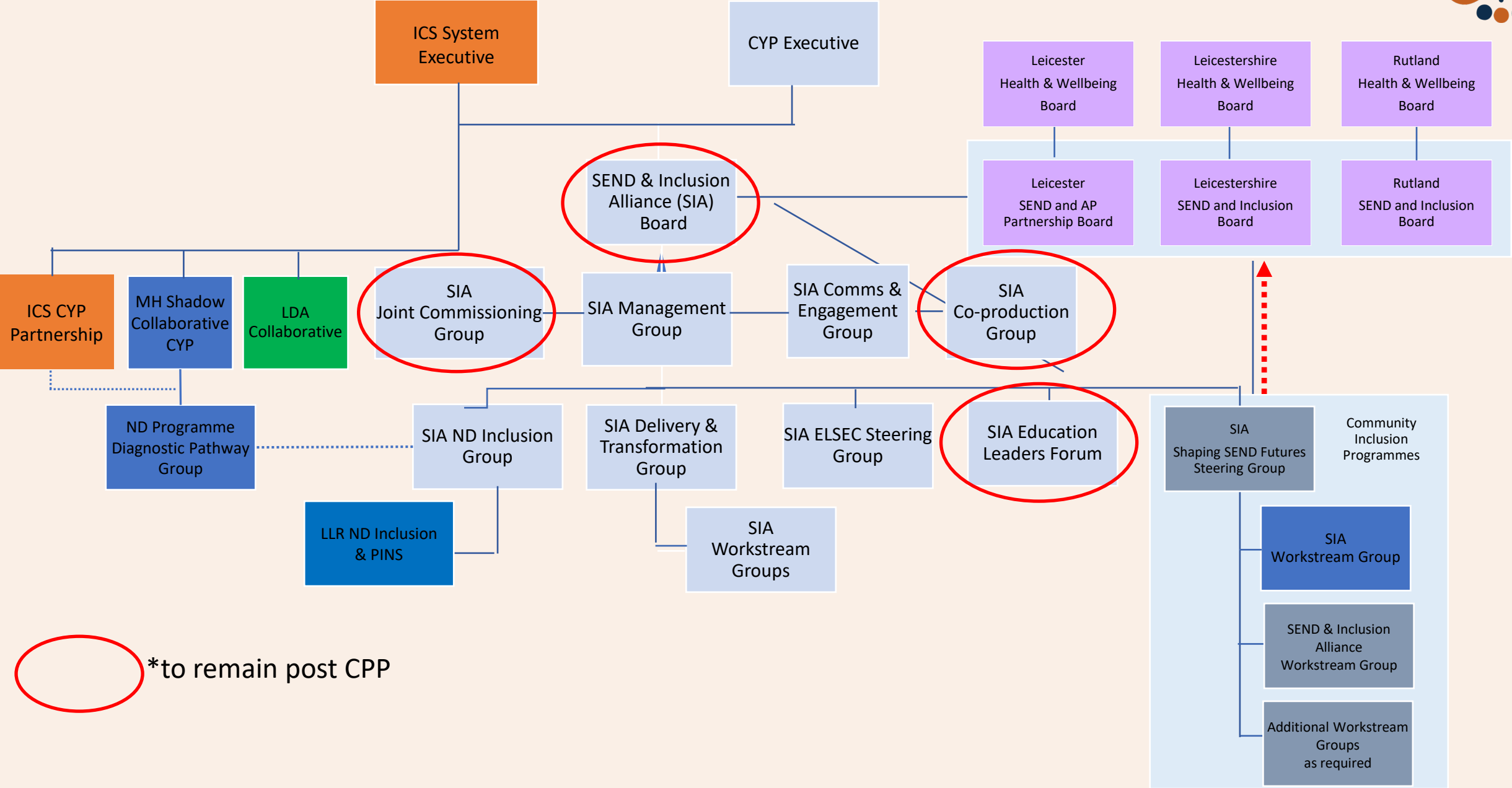


2025/26 2026/27 2027/28 2028/29 2029/30

- 1 MH (moderate) /trauma/attachment
- 2 Information, Advice and Support
- 3 Preparation for adulthood (Post-16)
- 4 Coordination and navigation
- 5 Integrated support while waiting offer
- 6 Speech, language and communication
- 7 SEND Transport



SEND and Inclusion Alliance 2025/26





Beyond the CPP...

The LLR SEND & Inclusion Alliance will:

- Streamline our Central Delivery Team hosted by SDSA
- Focus on facilitating joint/aligned commissioning priorities
- Support scale and adoption of LLR Shaping SEND Futures (Community Inclusion Programme)
- Deliver commitments identified within our Operational Plan
- Strengthening collaboration with RIIA and regional PCFs
- Be a RIIA SEND Leadership Programme delivery partner and peer challenge facilitator
- Continue to inform the development of the RIIA data dashboard
- Seek to secure ongoing funding (beyond July 2027)

Please visit our website: <https://www.llrsia.com/>